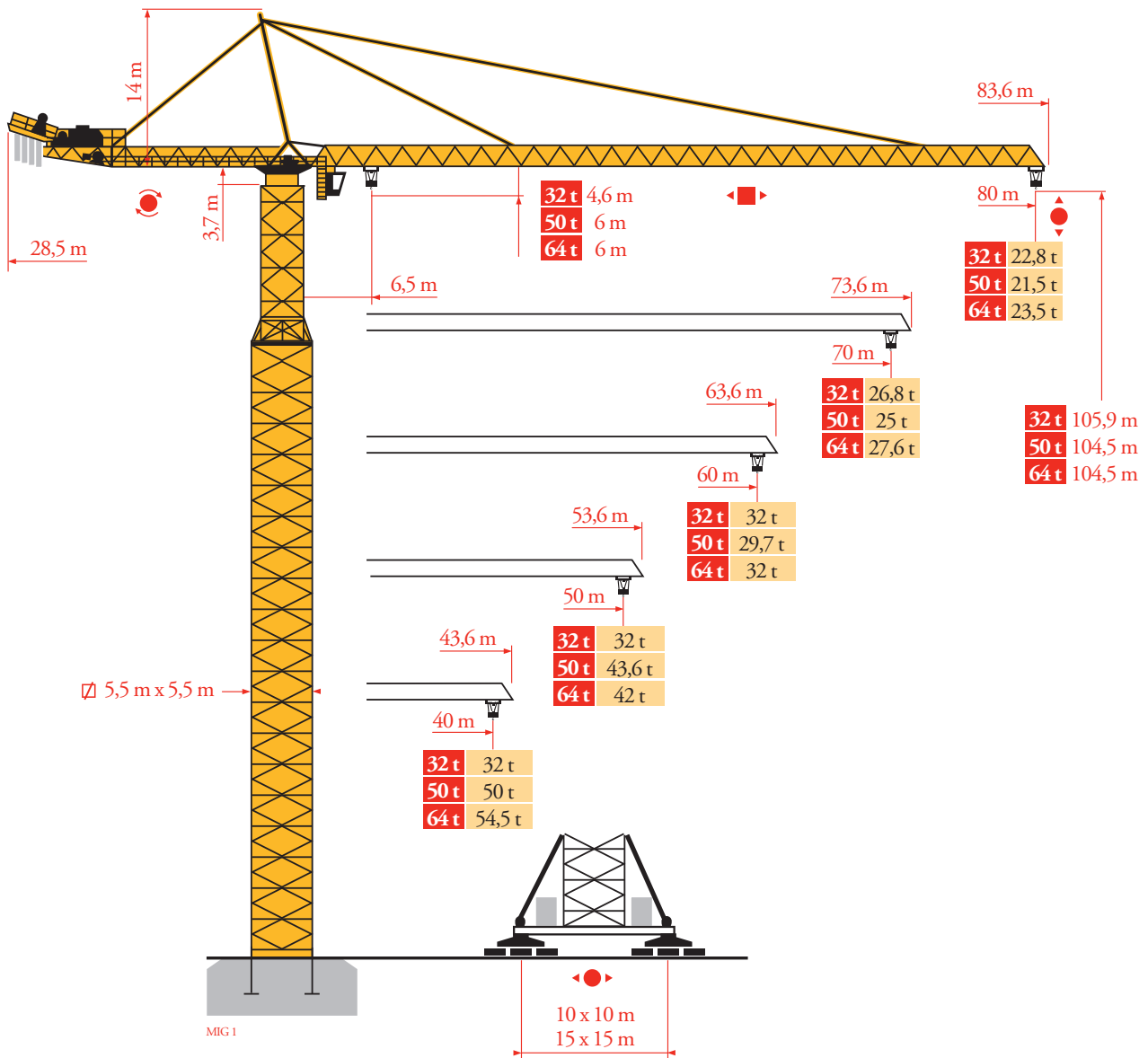


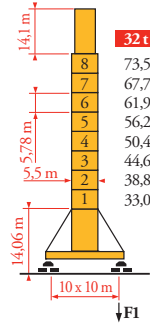
Potain MD 2200



Mat / Réactions
 Mast / Eckdrücke
 Masts / Reactions
 Mástil / Reacciones
 Torre / Reazioni
 Tramo / Reacções
 Композиции башни /
 Реакции

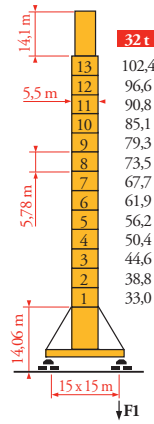
MIG 1

5,5 m x 5,5 m



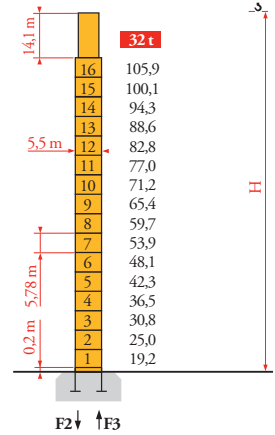
JC 1050

F1	32 t	314 t	250 t
	50 t	314 t	250 t
	64 t	314 t	250 t



KA 1051

F1	32 t	285 t	284 t
	50 t	285 t	284 t
	64 t	285 t	284 t



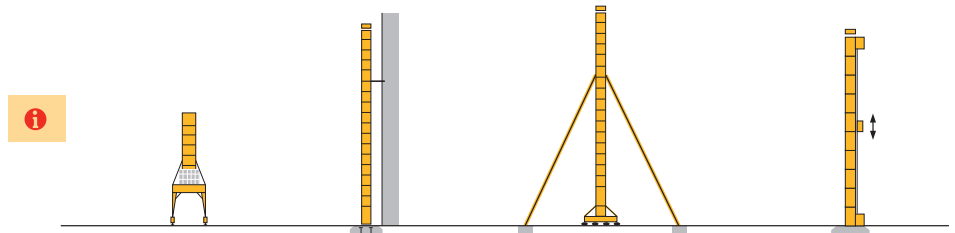
PA 1052

F2	32 t	412 t	530 t
	50 t	412 t	530 t
	64 t	412 t	530 t
F3	32 t	128 t	271 t
	50 t	128 t	271 t
	64 t	128 t	271 t

H 50 t 64 t = H - 1,4 m

Autres implantations
 Aufstellmöglichkeiten
 Mounting possibilities
 Otras implantaciones
 Altre postazioni
 Outras implantações
 Возможности установки

MIG 1



FR

- Réactions en service
- Réactions hors service
- A vide sans lest (ni train de transport) avec flèche et hauteur maximum

i

Nous consulter

DE

- Reaktionskräfte in Betrieb
- Reaktionskräfte außer Betrieb

Ohne Last, Ballast (und Transportachse), mit Maximalausleger und Maximalhöhe

Auf Anfrage

EN

- Reactions in service
- Reactions out of service
- Without load, ballast (or transport axles), with maximum jib and maximum height

Consult us

ES

- Reacciones en servicio
- Reacciones fuera de servicio

Sin carga, sin lastre, (ni tren de transporte), flecha y altura máxima

Consultarnos

IT

- Reazioni in servizio
- Reazioni fuori servizio
- A vuoto, senza zavorra (ne assali di trasporto) con braccio massimo e altezza massima

Consultateci

PT

- Reacções em serviço
- Reacções fora de serviço
- Sem carga (nem trem de transporte)- sem lastro com lança e altura máximas

Consultar-nos

RU

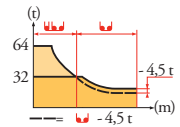
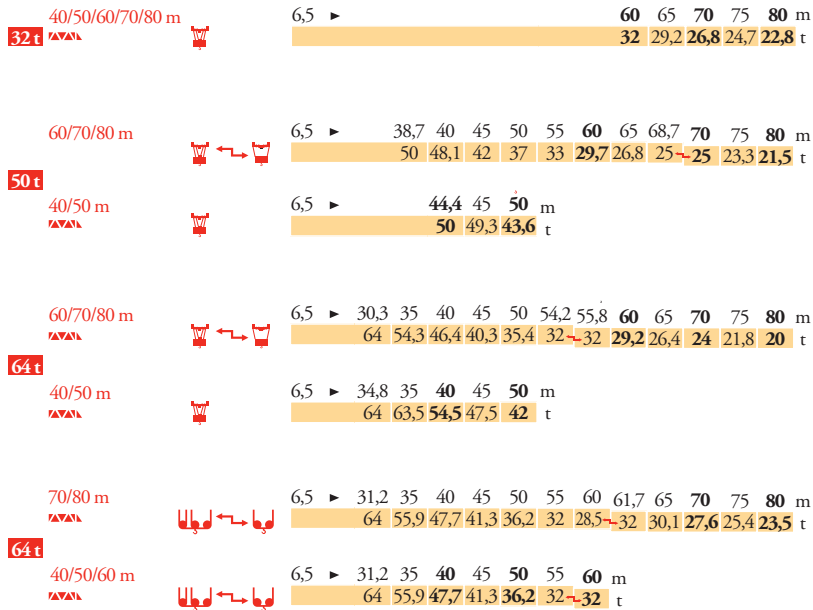
- Реакции при работе
- Реакции в покое

Вес без груза, балласта (или транспортных осей), с максимальной длиной стрелы и максимальной высотой

Проконсультируйтесь у нас

Courbes de charges
 Lastkurven
 Load diagrams
 Curvas de cargas
 Curve di carico
 Curva de cargas
 Диаграммы
 грузоподъемностей

MIG 1



Mécanismes
 Antriebe
 Mechanisms
 Meccanismi
 Mecanismos
 Механизмы

MIG 1

i			U		UU					ch - PS hp	kW			
↑	32 t	250 LCC 80	m/min	46 → 68 → 86 → 108 → 122	23 → 34 → 43 → 54 → 61						250	180	620 m	
		τ	16	12	8	4	2	32	24	16	6	4		
	50 t	250 LCC 125	m/min	30 → 44 → 56 → 72 → 80	15 → 22 → 28 → 36 → 40						250	180	690 m	
		τ	25	18,8	12,5	6,2	3,1	50	37,5	25	12,5	6,25		
64 t	250 LCC 160	m/min	24 → 34 → 44 → 56 → 62	12 → 17 → 22 → 28 → 31						250	180	440 m		
	τ	32	24	16	8	4	64	48	32	16	8			
500 LCC 160	m/min	60 → 82 → 120	30 → 41 → 60						500	370	610 m			
	τ	32	21	5,4	64	42	10,8							
←	32 t	15 DVF 16	m/min	0 → 33 (32 t) - 0 → 50 (16 t) - 0 → 67 (8 t) - 0 → 100 (2 t)						15	11			
	50 t	25 DVF 25	m/min	0 → 33 (50 t) - 0 → 66 (25 t) - 0 → 80 (12,5 t)						25	18			
	64 t	25 DVF 33	m/min	0 → 25 (64 t) - 0 → 50 (32 t)						25	18			
		RVF	tr/min U/min rpm	0 → 0,6						4 x 15	4 x 11			
			m/min	0 → 16						16 x 4	16 x 3			
				8,5 - 17						12 x 5	12 x 3,7			
			IEC 60204-32											
			400 V (+10% -10%) 50 Hz / 480V (+6% -10%) 60Hz									250 LCC : 360 kVA 500 LCC : 560 kVA		

FR
 Levage
 Distribution
 Orientation
 Translation

DE
 Heben
 Katzfahren
 Schwenken
 Kranfahren

EN
 Hoisting
 Trolleying
 Slewing
 Travelling

ES
 Elevación
 Distribución
 Orientación
 Traslación

IT
 Sollevamento
 Distribuzione
 Rotazione
 Traslazione

PT
 Elevação
 Distribuição
 Rotação
 Translação

RU
 Подъем
 Перемещение каретки
 Поворот
 Перемещение крана



Document commercial non contractuel. Pour toute information technique se référer à la notice correspondante.

Unverbindliches Vertriebsdokument. Für technische Informationen, siehe die entsprechenden Anweisungen.

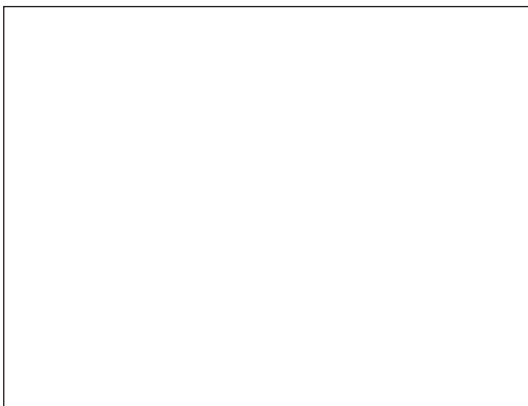
This commercial document is not legally binding. For any technical information, please refer to the corresponding instructions.

Documento comercial no contractual. Para cualquier información técnica, ver la noticia correspondiente.

Documento commerciale non vincolante, per tutte le informazioni tecniche fare riferimento al catalogo istruzioni.

Documento comercial não contratual. Para qualquer informação técnica complementar consultar as respectivas instruções.

Этот коммерческий документ не является юридически обязательным. Для получения технической информации, см. соответствующие инструкции.



MD 2200



Manitowoc - Americas - World Headquarters
2400 S. 44th Street • Manitowoc • WI 54220 USA
Tel: +1 920 684 4410 • Fax: +1 920 652 9778

Manitowoc - Europe, Middle East & Africa
Ecully, France
18, rue de Charbonnières B.P. 173 • 69132 ECULLY Cedex • FRANCE
Tel: +33 (0)4 72 18 20 20 • Fax: +33 (0)4 72 18 20 00

Manitowoc - Asia Pacific
16F Xu Hui Yuan Building,
1089 Zhongshan No.2 Road (S) • Shanghai 200030 China
Tel: +86 21 6457 0066 • Fax: +86 21 6457 4955

REF. 2009 36 MIC 1