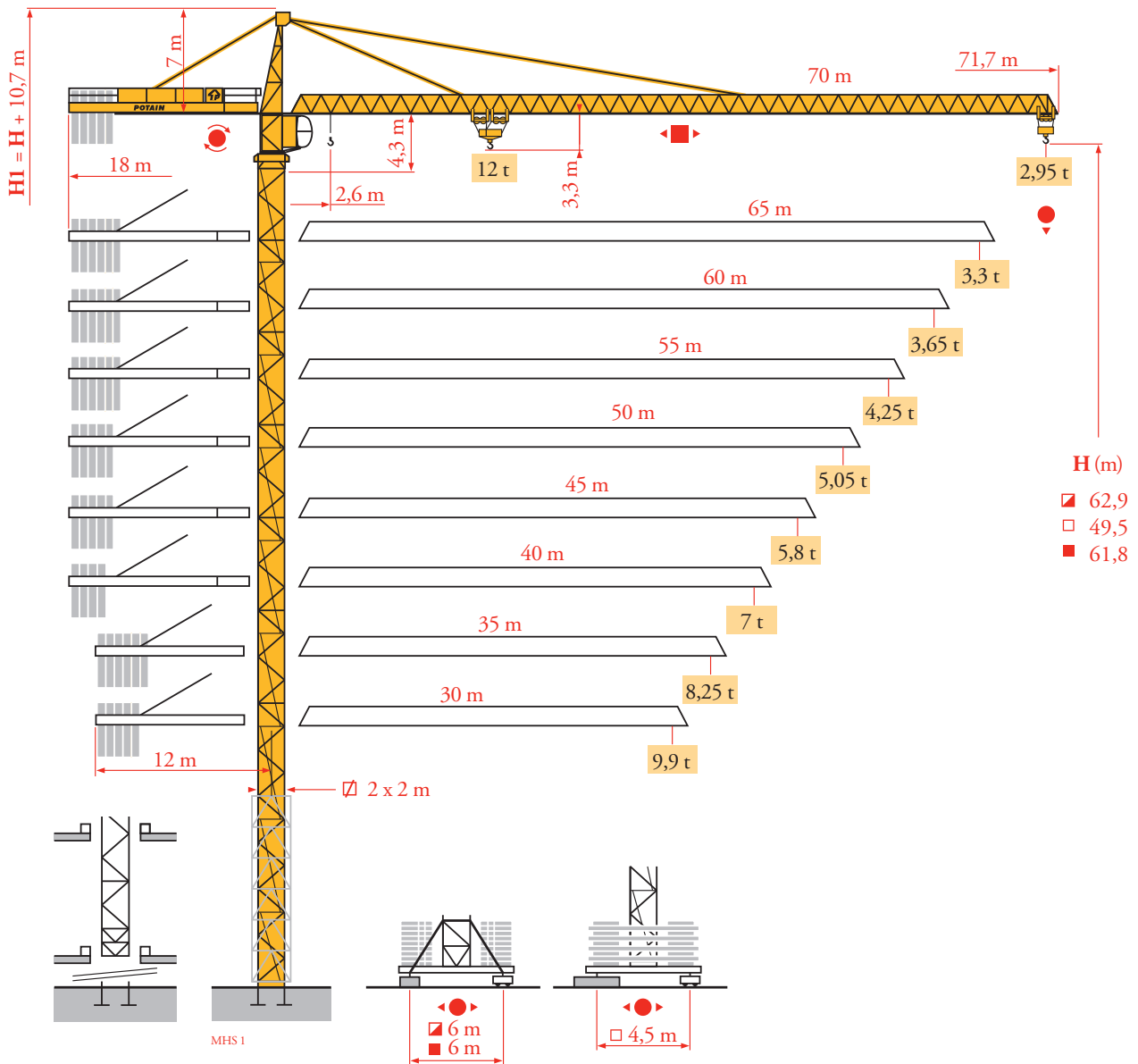


Potain MD 285C

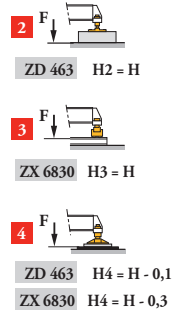
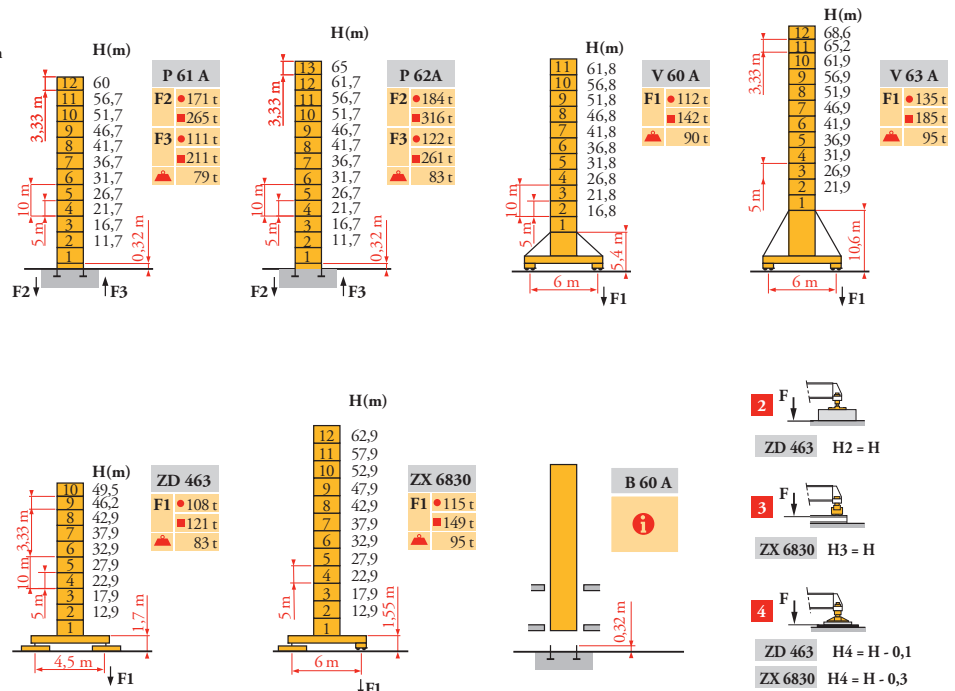


Mat / Réactions
 Maste / Eckdrücke
 Masts / Reactions
 Mástil / Reacciones
 Torre / Reazioni
 Tramo / Reações
 Композиции башни /
 Реакции

MHS 1

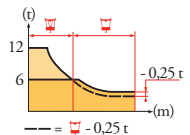
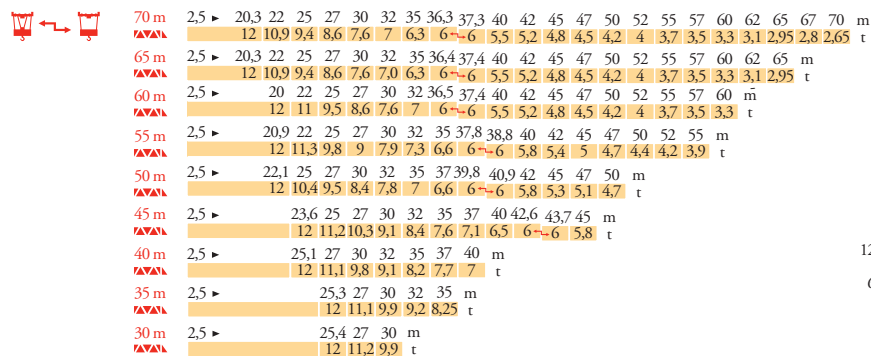
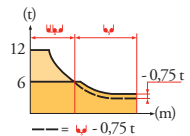
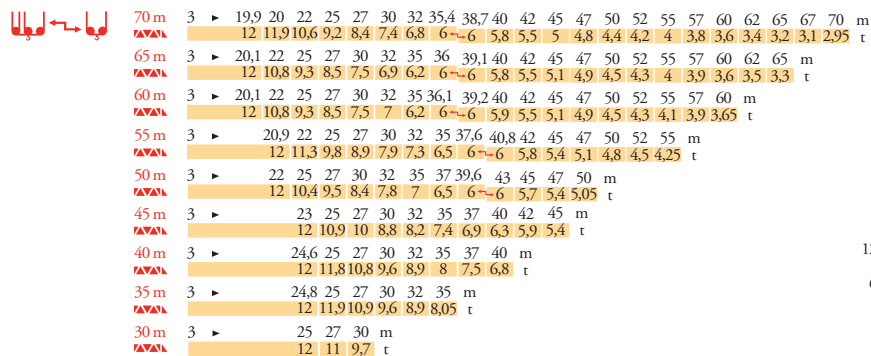
2 m

30 m ⇒ 65 m



Courbes de charges
 Lastkurven
 Load diagrams
 Curvas de cargas
 Curve di carico
 Curva de cargas
 Диаграммы
 грузоподъемностей

MHS 1



FR

- Réactions en service
- Réactions hors service
- ▲ A vide sans lest (ni train de transport) avec flèche et hauteur maximum

DE

- Reaktionskräfte in Betrieb
- Reaktionskräfte außer Betrieb
- ▲ Ohne Last, Ballast (und Transportachse), mit Maximalausleger und Maximalhöhe

EN

- Reactions in service
- Reactions out of service
- ▲ Without load, ballast (or transport axles), with maximum jib and maximum height

ES

- Reacciones en servicio
- Reacciones fuera de servicio
- ▲ Sin carga, sin lastre, (ni tren de transporte), flecha y altura máxima

IT

- Reazioni in servizio
- Reazioni fuori servizio
- ▲ A vuoto, senza zavorra (ne assali di trasporto) con braccio massimo e altezza massima

PT

- Reações em serviço
- Reações fora de serviço
- ▲ Sem carga (nem trem de transporte) - sem lastro com lança e altura máximas

RU

- Реакции при работе
- Реакции в покое
- ▲ Вес без груза, балласта (или транспортных осей), с максимальной длиной стрелы и максимальной высотой

Lest de contre-flèche
Gegenauslegerballast
Counter-jib ballast
Lastre de contra flecha
Contrappeso
Lastros da contra lança
Балласт на консоли

MHS 1

		4 600 - 4 200 - 3 400 - 2 300 kg	
		50 - 75 - 100 LVF	150 LCC
		(kg)	
70 m	18 m	27 600	26 000
65 m	18 m	26 400	25 300
60 m	18 m	24 900	23 000
55 m	18 m	22 600	20 700
50 m	18 m	20 700	19 500
45 m	18 m	18 000	17 200
40 m	18 m	16 100	14 900
35 m	12 m	27 600	25 300
30 m	12 m	20 700	18 400

		4 200 - 700 kg	
		50 - 75 - 100 LVF	150 LCC
		(kg)	
	18 m	26 600	25 900
	18 m	25 900	24 500
	18 m	24 500	23 100
	18 m	22 400	21 000
	18 m	21 000	18 900
	18 m	18 200	16 100
	18 m	16 100	14 000
	12 m	26 600	25 900
	12 m	20 300	18 900

Lest de base - Grundballast
Base ballast - Lastre de base
Zavorra di base - Lastros da base
Базовый балласт

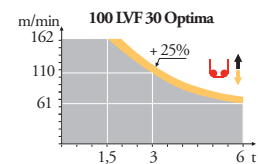
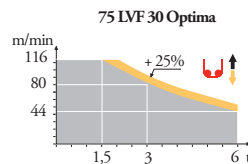
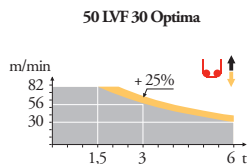
MHS 1

2 m	V 60 A		H (m)	61,8	56,8	51,8	46,8	41,8	36,8	31,8	26,8	21,8	16,8	
				120	84	72	72	72	72	72	72	72	72	72
2 m	V 63 A		H (m)	68,6	65,2	61,9	56,9	51,9	46,9	41,9	36,9	31,9	26,9	21,9
				180	156	120	96	72	72	72	72	72	72	72
2 m	ZD 463		H (m)	49,5	46,2	42,9	37,9	32,9	27,9	22,9	15,9	12,9		
				115	115	115	115	115	115	115	115	115		
2 m	ZX 6830		H (m)	62,9	57,9	52,9	47,9	42,9	37,9	32,9	27,9	22,9	17,9	12,9
				121	91	71	61	61	61	61	61	61	61	61

Mécanismes
Antriebe
Mechanisms
Mecanismos
Meccanismi
Mecanismos
Механизмы

MHS 1

							ch - PS hp	kW		
			m/min	t	m/min	t				
	50 LVF 30 Optima	m/min	0 → 30 → 40 → 56 → 82		0 → 15 → 20 → 28 → 41		50	37	337 m	
		t	6	4,5	3	1,5				12
	75 LVF 30 Optima	m/min	0 → 44 → 56 → 80 → 116		0 → 22 → 28 → 40 → 58		75	55	766 m	
		t	6	4,5	3	1,5				12
100 LVF 30 Optima	m/min	0 → 61 → 80 → 110 → 162		0 → 30,5 → 40 → 55 → 81		100	75	941 m		
	t	6	4,5	3	1,5				12	9
150 LCC 30	m/min	92 → 111 → 139 → 185 → 222		46 → 55 → 69 → 92 → 111		150	110	762 m		
	t	6	4,5	3	1,5				0,75	12
	6 DVF 4	m/min	0 → 50 (12 t) 0 → 100 (6 t) 0 → 120 (3 t)				5,5	4		
	RVF 162 Optima +	tr/min U/min rpm	0 → 0,7				2 x 7,5	2 x 5,5		
	ZD 463 RT 443 A1 2V	m/min	15 - 30				4 x 5	4 x 3,7		
	V 60 A RT 544 A1 2V R ≥ 13 m	m/min	13,5 - 27				4 x 7	4 x 5,2		
		IEC 60204-32				kVA				
		400 V (+10% -10%) 50 Hz / 480V (+6% -10%) 60Hz				50 LVF : 70 kVA 75 LVF : 90 kVA 100 LVF : 120 kVA 150 LCC : 150 kVA				



FR
 Nous consulter
 Levage
 Distribution
 Orientation
 Translation

DE
 Auf Anfrage
 Heben
 Katzfahren
 Schwenken
 Kranfahren

EN
 Consult us
 Hoisting
 Trolleying
 Slewing
 Travelling

ES
 Consultarnos
 Elevación
 Distribución
 Orientación
 Traslación

IT
 Consultateci
 Sollevamento
 Distribuzione
 Rotazione
 Traslazione

PT
 Consultar-nos
 Elevação
 Distribuição
 Rotação
 Translação

RU
 Проконсультируйтесь у нас
 Подъем
 Перемещение каретки
 Поворот
 Перемещение крана



Document commercial non contractuel. Pour toute information technique se référer à la notice correspondante.

Unverbindliches Vertriebsdokument. Für technische Informationen, siehe die entsprechenden Anweisungen.

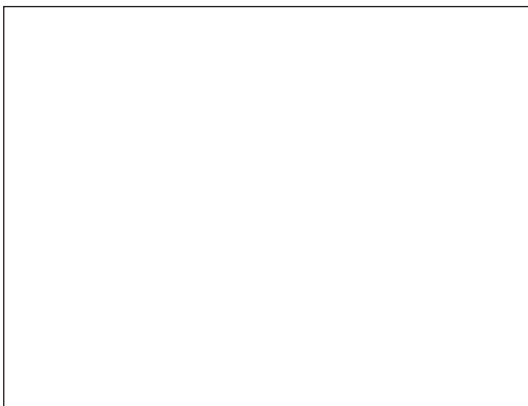
This commercial document is not legally binding. For any technical information, please refer to the corresponding instructions.

Documento comercial no contractual. Para cualquier información técnica, ver la noticia correspondiente.

Documento commerciale non vincolante, per tutte le informazioni tecniche fare riferimento al catalogo istruzioni.

Documento comercial não contratual. Para qualquer informação técnica complementar consultar as respectivas instruções.

Этот коммерческий документ не является юридически обязательным. Для получения технической информации, см. соответствующие инструкции.



Manitowoc - Americas - World Headquarters
2400 S. 44th Street • Manitowoc • WI 54220 USA
Tel: +1 920 684 4410 • Fax: +1 920 652 9778

Manitowoc - Europe, Middle East & Africa
Ecully, France
18, rue de Charbonnières B.P. 173 • 69132 ECULLY Cedex • FRANCE
Tel: +33 (0)4 72 18 20 20 • Fax: +33 (0)4 72 18 20 00

Manitowoc - Asia Pacific
16F Xu Hui Yuan Building,
1089 Zhongshan No.2 Road (S) • Shanghai 200030 China
Tel: +86 21 6457 0066 • Fax: +86 21 6457 4955