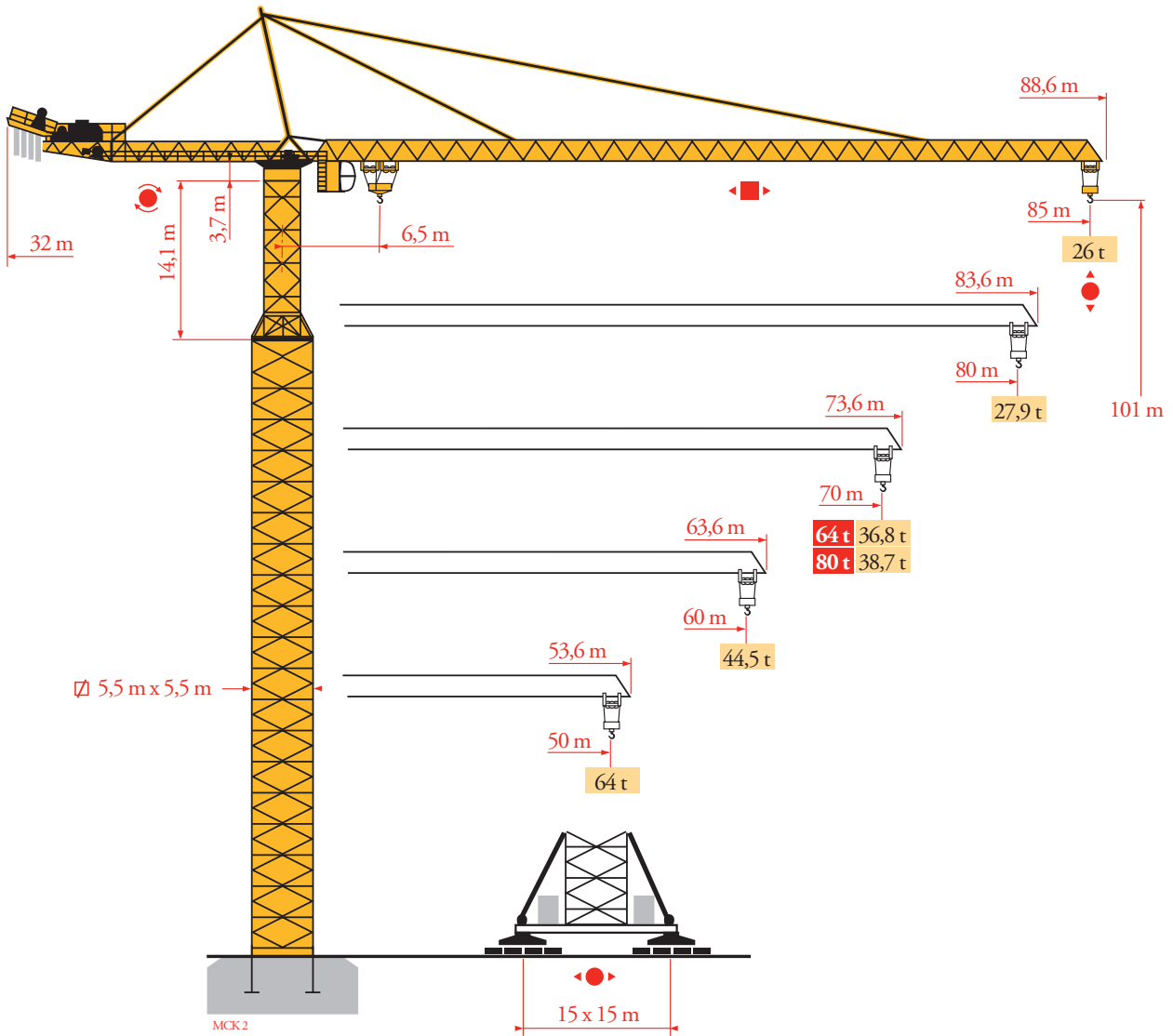


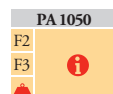
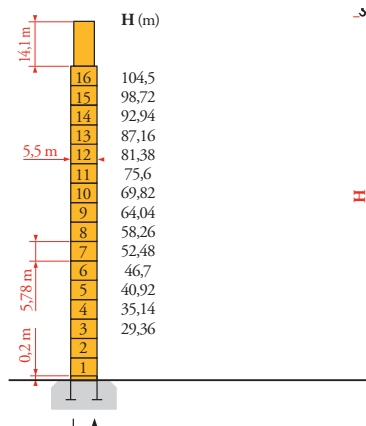
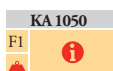
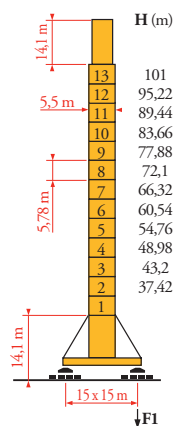
# Potain MD 3200



Mat / Réactions  
 Maste / Eckdrücke  
 Masts / Reactions  
 Mástil / Reacciones  
 Torre / Reazioni  
 Tramo / Reacções  
 Композиции башни /  
 Реакции

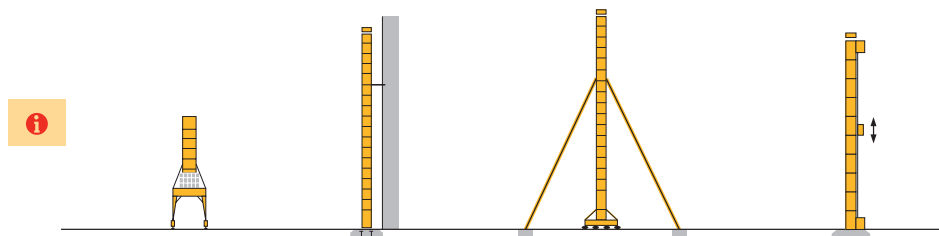
MCK3

5,5 m x 5,5 m



Autres implantations  
 Aufstellmöglichkeiten  
 Mounting possibilities  
 Otras implantaciones  
 Altre postazioni  
 Outras implantações  
 Возможности установки

MCK3



FR

- Réactions en service
- Réactions hors service
- A vide sans lest (ni train de transport) avec flèche et hauteur maximum
- Nous consulter

DE

- Reaktionskräfte in Betrieb
- Reaktionskräfte außer Betrieb
- Ohne Last, Ballast (und Transportachse), mit Maximalausleger und Maximalhöhe
- Auf Anfrage

EN

- Reactions in service
- Reactions out of service
- Without load, ballast (or transport axles), with maximum jib and maximum height
- Consult us

ES

- Reacciones en servicio
- Reacciones fuera de servicio
- Sin carga, sin lastre, (ni tren de transporte), flecha y altura máxima
- Consultarnos

IT

- Reazioni in servizio
- Reazioni fuori servizio
- A vuoto, senza zavorra (ne assali di trasporto) con braccio massimo e altezza massima
- Consultateci

PT

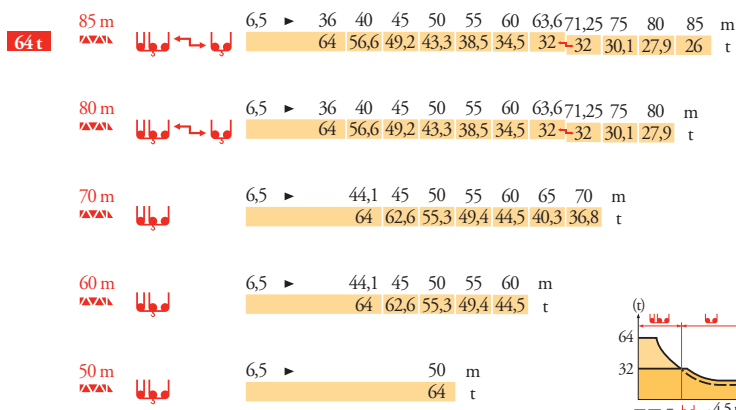
- Reacções em serviço
- Reacções fora de serviço
- Sem carga (nem trem de transporte)- sem lastro com lança e altura máximas
- Consultar-nos

RU

- Реакции при работе
- Реакции в покое
- Вес без груза, балласта (или транспортных осей), с максимальной длиной стрелы и максимальной высотой
- Проконсультируйтесь у нас

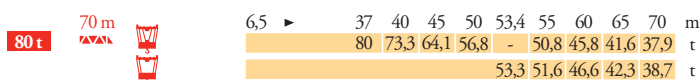
Courbes de charges  
Lastkurven  
Load diagrams  
Curvas de cargas  
Curve di carico  
Curva de cargas  
Диаграммы  
грузоподъемностей

МКК<sub>3</sub>



Mécanismes  
Antriebe  
Mechanisms  
Mecanismos  
Meccanismi  
Mecanismos  
Механизмы

МКК<sub>4</sub>



| 64 t                   |                       |                               |   |      |   |      |    |      |    |   | ch - PS | kW    |        |          |    |     |     |       |
|------------------------|-----------------------|-------------------------------|---|------|---|------|----|------|----|---|---------|-------|--------|----------|----|-----|-----|-------|
| 500 LCC 160            | m/min                 | 60                            | →   | 82   | → | 120  | 30 | →    | 41 | → | 60      | 500   | 370    | 610 m    |    |     |     |       |
|                        | t                     | 32                            |   | 21   |   | 5,4  | 64 |      | 42 |   | 10,8    |       |        |          |    |     |     |       |
| 800 LCC 160            | m/min                 | 92                            | →   | 126  | → | 160  | 46 | →    | 63 | → | 80      | 785   | 560    | 610 m    |    |     |     |       |
|                        | t                     | 32                            |   | 21   |   | 5,4  | 64 |      | 42 |   | 10,8    |       |        |          |    |     |     |       |
| 25 DVF 33              | m/min                 | 0 → 25 (64 t) - 0 → 50 (32 t) |   |      |   |      |    |      |    |   |         | 25    | 18,5   |          |    |     |     |       |
| RVF                    | t/min<br>U/min<br>rpm | 0 → 0,6                       |   |      |   |      |    |      |    |   |         | 6x 25 | 6 x 18 |          |    |     |     |       |
| 80 t                   |                       |                               |   |      |   |      |    |      |    |   | ch - PS | kW    |        |          |    |     |     |       |
| 250 LCC 133            | m/min                 | 15                            | →   | 18   | → | 22,5 | →  | 30   | 10 | → | 12      | →     | 15     | →        | 20 | 250 | 180 | 610 m |
|                        | t                     | 53,3                          |   | 39,8 |   | 26,5 |    | 13,3 | 80 |   | 60      |       | 40     |          | 20 |     |     |       |
| 25 DVF 33              | m/min                 | 0 → 50                        |   |      |   |      |    |      |    |   |         | 25    | 18,5   |          |    |     |     |       |
| RVF                    | t/min<br>U/min<br>rpm | 0 → 0,6                       |   |      |   |      |    |      |    |   |         | 6x 15 | 6 x 11 |          |    |     |     |       |
| 100 t - 120 t - 160 t  |                       |                               |   |      |   |      |    |      |    |   |         |       |        |          |    |     |     |       |
| KA 1050                | RTVF                  | m/min                         | 0 → 17  |      |   |      |    |      |    |   |         |       | 16 x 7 | 16 x 5,2 |    |     |     |       |
| CEI 38 IEC 38          |                       |                               | kVA   |      |   |      |    |      |    |   |         |       |        |          |    |     |     |       |
| 400 V (+6% -10%) 50 Hz |                       |                               | 250 LCC : 315 kVA<br>500 LCC : 515 kVA<br>800 LCC : 800 kVA |      |   |      |    |      |    |   |         |       |        |          |    |     |     |       |

- |              |            |            |              |               |              |                     |
|--------------|------------|------------|--------------|---------------|--------------|---------------------|
| <b>FR</b>    | <b>DE</b>  | <b>EN</b>  | <b>ES</b>    | <b>IT</b>     | <b>PT</b>    | <b>RU</b>           |
| Levage       | Heben      | Hoisting   | Elevación    | Sollevamento  | Elevação     | Подъем              |
| Distribution | Katzfahren | Trolleying | Distribución | Distribuzione | Distribuição | Перемещение каретки |
| Orientation  | Schwenken  | Slewing    | Orientación  | Rotazione     | Rotação      | Поворот             |
| Translation  | Kranfahren | Travelling | Traslación   | Traslazione   | Translação   | Перемещение крана   |



\* Document commercial non contractuel. Pour toute information technique se référer à la notice correspondante.

\* Unverbindliches Vertriebsdokument. Für technische Informationen, siehe die entsprechenden Anweisungen.

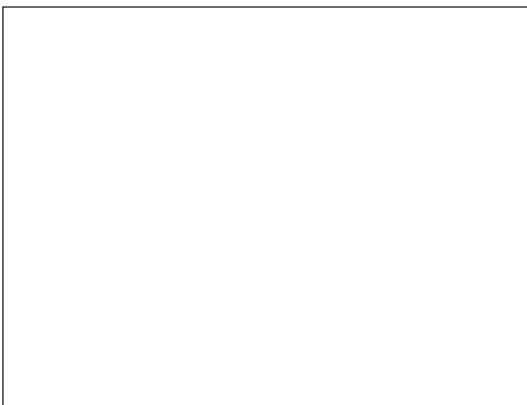
\* This commercial document is not legally binding. For any technical information, please refer to the corresponding instructions.

\* Documento commercial no contractual. Para cualquier información técnica, ver la noticia correspondiente.

\* Documento commerciale non vincolante, per tutte le informazioni tecniche fare riferimento al catalogo istruzioni.

\* Documento comercial não contratual. Para qualquer informação técnica complementar consultar as respectivas instruções.

\* Этот коммерческий документ не является юридически обязательным. Для получения технической информации, см. соответствующие инструкции.



MD 3200



**Manitowoc - Americas - World Headquarters**  
2400 S. 44th Street • Manitowoc • WI 54220 USA  
Tel: +1 920 684 4410 • Fax: +1 920 652 9778

**Manitowoc - Europe, Middle East & Africa**  
Manitowoc France SAS  
18, rue de Charbonnières B.P. 173 • 69132 ECULLY Cedex • FRANCE  
Tel: +33 (0)4 72 18 20 20 • Fax: +33 (0)4 72 18 20 00

**Manitowoc - Asia Pacific**  
16F Xu Hui Yuan Building,  
1089 Zhongshan No.2 Road (S) • Shanghai 200030 China  
Tel: +86 21 6457 0066 • Fax: +86 21 6457 4955

REF. 2004 52 MCK 5