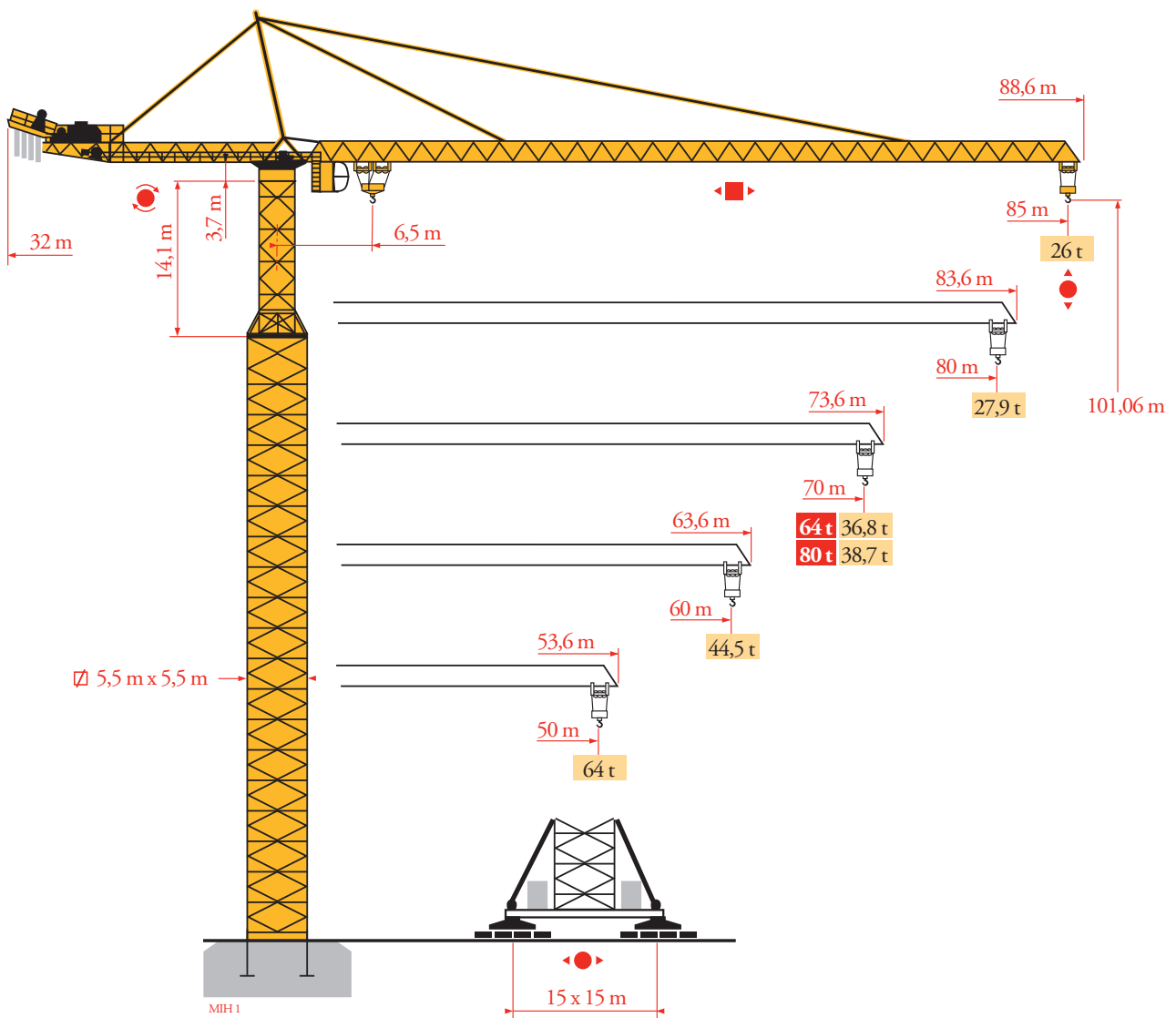


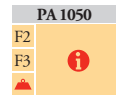
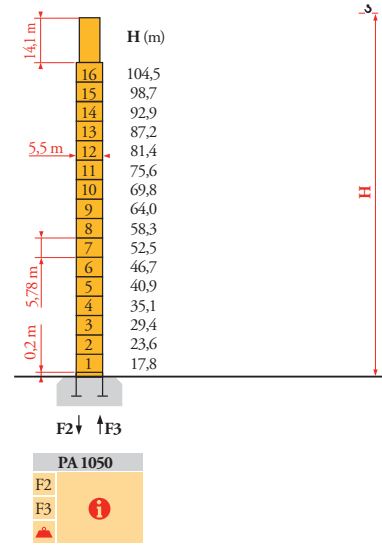
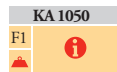
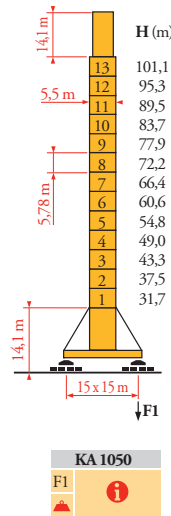
Potain MD 3200



Mat / Réactions
 Maste / Eckdrücke
 Masts / Reactions
 Mástil / Reacciones
 Torre / Reazioni
 Tramo / Reações
 Композиции башни /
 Реакции

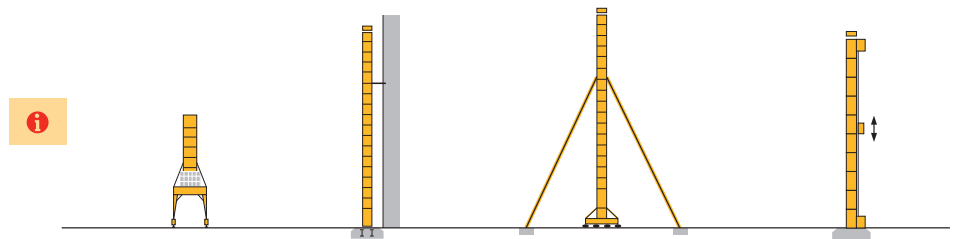
MH1

5,5 m x 5,5 m



Autres implantations
 Aufstellmöglichkeiten
 Mounting possibilities
 Otras implantaciones
 Altre postazioni
 Outras implantações
 Возможности установки

MH1



FR

- Réactions en service
- Réactions hors service
- A vide sans lest (ni train de transport) avec flèche et hauteur maximum
- Nous consulter

DE

- Reaktionskräfte in Betrieb
- Reaktionskräfte außer Betrieb
- Ohne Last, Ballast (und Transportachse), mit Maximalausleger und Maximalhöhe
- Auf Anfrage

EN

- Reactions in service
- Reactions out of service
- Without load, ballast (or transport axles), with maximum jib and maximum height
- Consult us

ES

- Reacciones en servicio
- Reacciones fuera de servicio
- Sin carga, sin lastre, (ni tren de transporte), flecha y altura máxima
- Consultarnos

IT

- Reazioni in servizio
- Reazioni fuori servizio
- A vuoto, senza zavorra (ne assali di trasporto) con braccio massimo e altezza massima
- Consultateci

PT

- Reações em serviço
- Reações fora de serviço
- Sem carga (nem trem de transporte)- sem lastro com lança e altura máximas
- Consultar-nos

RU

- Реакции при работе
- Реакции в покое
- Вес без груза, балласта (или транспортных осей), с максимальной длиной стрелы и максимальной высотой
- Проконсультируйтесь у нас

Courbes de charges

Lastkurven

Load diagrams

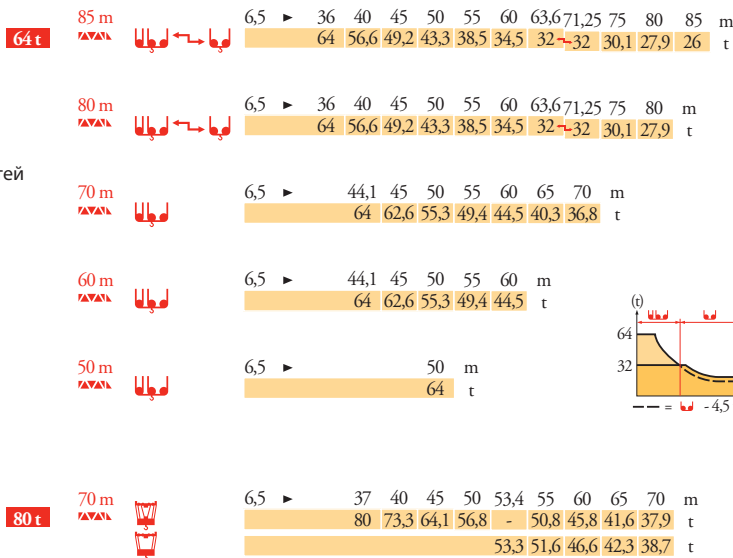
Curvas de cargas

Curve di carico

Curva de cargas

Диаграммы грузоподъемностей

MH1



Mécanismes

Antriebe

Mechanisms

Mecanismos

Meccanismi

Mecanismos

Механизмы

MH1

64 t											ch - PS	kW						
500 LCC 160	m/min	60	→	82	→	120	30	→	41	→	60	500	370	610 m				
	t	32		21		5,4	64		42		10,8							
800 LCC 160	m/min	92	→	126	→	160	46	→	63	→	80	785	560	610 m				
	t	32		21		5,4	64		42		10,8							
25 DVF 33	m/min	0 → 25 (64 t) - 0 → 50 (32 t)										25	18,5					
RVF	tr/min U/min rpm	0 → 0,6										6x25	6x18					
80 t											ch - PS	kW						
250 LCC 133	m/min	15	→	18	→	22,5	→	30	10	→	12	→	15	→	20	250	180	610 m
	t	53,3		39,8		26,5		13,3	80		60		40		20			
25 DVF 33	m/min	0 → 50										25	18,5					
RVF	tr/min U/min rpm	0 → 0,6										6x15	6x11					
100 t - 120 t - 160 t			i															
KA 1050	RIVF	m/min	0 → 17										16x7	16x5,2				
IEC 60204-32						kVA												
400 V (+10% -10%) 50 Hz / 480V (+6% -10%) 60Hz						250 LCC : 315 kVA 500 LCC : 515 kVA 800 LCC : 800 kVA												

- FR**
Levage
- DE**
Katzfahren
- EN**
Hoisting
- ES**
Elevación
- IT**
Sollevamento
- PT**
Elevação
- RU**
Подъем

- FR**
Distribution
- DE**
Katzfahren
- EN**
Trolleying
- ES**
Distribución
- IT**
Distribuzione
- PT**
Distribuição
- RU**
Перемещение кареток

- FR**
Orientation
- DE**
Schwenken
- EN**
Slewing
- ES**
Orientación
- IT**
Rotazione
- PT**
Rotação
- RU**
Поворот

- FR**
Translation
- DE**
Kranfahren
- EN**
Travelling
- ES**
Traslación
- IT**
Traslazione
- PT**
Translação
- RU**
Перемещение крана



* Document commercial non contractuel. Pour toute information technique se référer à la notice correspondante.

* Unverbindliches Vertriebsdokument. Für technische Informationen, siehe die entsprechenden Anweisungen.

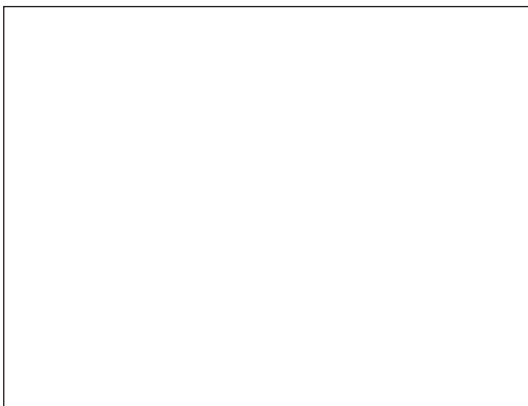
* This commercial document is not legally binding. For any technical information, please refer to the corresponding instructions.

* Documento comercial no contractual. Para cualquier información técnica, ver la noticia correspondiente.

* Documento commerciale non vincolante, per tutte le informazioni tecniche fare riferimento al catalogo istruzioni.

* Documento comercial não contratual. Para qualquer informação técnica complementar consultar as respectivas instruções.

* Этот коммерческий документ не является юридически обязательным. Для получения технической информации, см. соответствующие инструкции.



MD 3200



Manitowoc - Americas - World Headquarters
2400 S. 44th Street • Manitowoc • WI 54220 USA
Tel: +1 920 684 4410 • Fax: +1 920 652 9778

Manitowoc - Europe, Middle East & Africa
Ecully, France
18, rue de Charbonnières B.P. 173 • 69132 ECULLY Cedex • FRANCE
Tel: +33 (0)4 72 18 20 20 • Fax: +33 (0)4 72 18 20 00

Manitowoc - Asia Pacific
16F Xu Hui Yuan Building,
1089 Zhongshan No.2 Road (S) • Shanghai 200030 China
Tel: +86 21 6457 0066 • Fax: +86 21 6457 4955