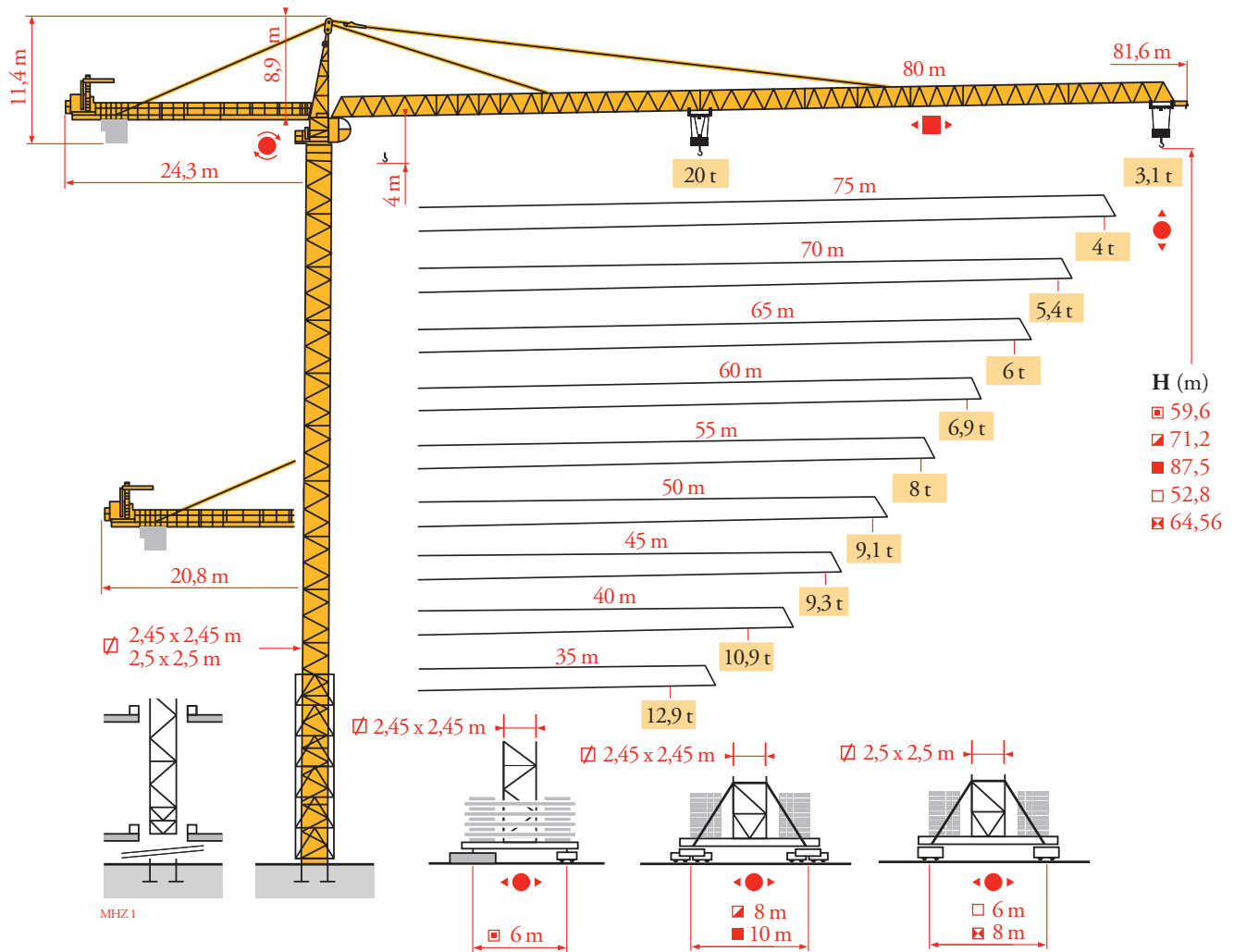


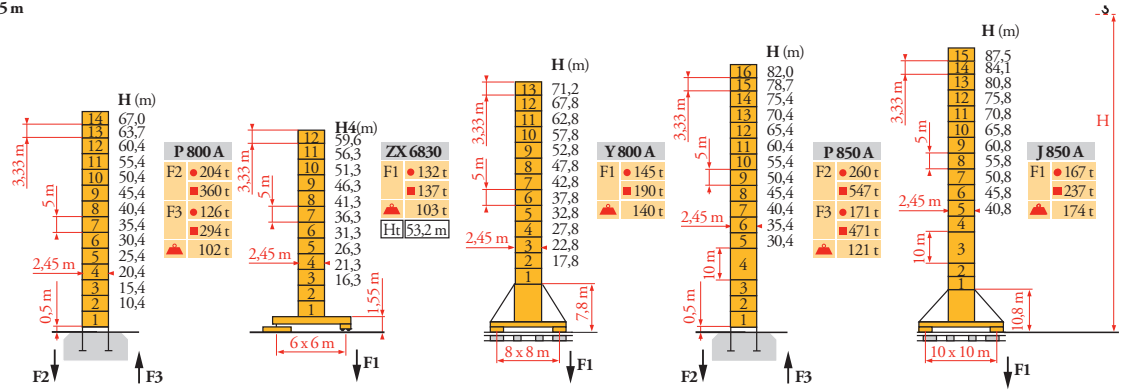
# Potain MD 485B M25



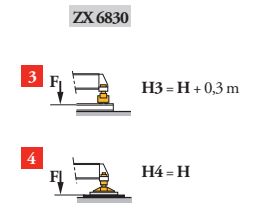
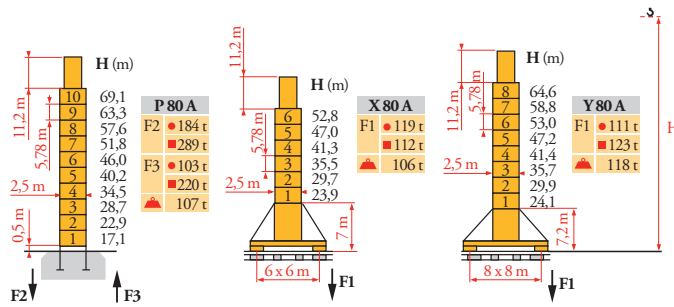
Mat / Réactions  $\square$  2,45 m

Maste / Eckdrücke  
Masts / Reactions  
Mástil / Reacciones  
Torre / Reazioni  
Tramo / Reações  
Композиции  
башни / Реакции

MH21



$\square$  2,5 m



Courbes de charges

Lastkurven

Load diagrams

Curvas de cargas

Curve di carico

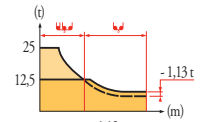
Curva de cargas

Диаграммы  
группоподъемностей

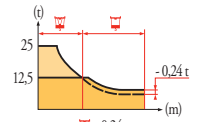
MH21



80 m	3.1	▶	143	15	17	20	22	25	25.2	27.2	30	32	35	40	45	50	55	60	65	70	75	80	m
▲▲▲	25	▲	236	20.3	16.7	14.8	12.6	12.5	-12.5	11.1	10.3	9.3	7.9	6.8	5.9	5.2	4.6	4.2	3.7	3.4	3	3	t
75 m	3.1	▶	156	17	20	22	25	27	27.7	29.9	32	35	40	45	50	55	60	65	70	75	80	m	
▲▲▲	25	▲	226	18.6	16.6	14.2	12.9	12.5	-12.5	11.6	10.4	8.9	7.7	6.8	6	5.3	4.8	4.3	4	4	4	4	t
70 m	3.1	▶	18	20	22	25	27	30	32.3	34.8	35	40	45	50	55	60	65	70	75	80	m		
▲▲▲	25	▲	22.2	19.8	17.1	15.6	13.7	12.5	-12.5	12.4	10.7	9.3	8.2	7.3	6.6	5.9	5.4	5	5	5	5	5	t
65 m	3.1	▶	18.1	20	22	25	27	30	32.4	34.9	35	40	45	50	55	60	65	70	75	80	m		
▲▲▲	25	▲	22.2	19.9	17.1	15.6	13.7	12.5	-12.5	12.5	10.7	9.3	8.2	7.3	6.6	5.9	5.4	5	5	5	5	5	t
60 m	3.1	▶	18.7	20	22	25	27	30	32	33.4	36.1	40	45	50	55	60	65	70	75	80	m		
▲▲▲	25	▲	23.1	20.7	17.8	16.2	14.3	13.2	12.5	-12.5	11.1	9.7	8.5	7.6	6.8	6	5.3	4.8	4.3	4	4	4	t
55 m	3.1	▶	19.3	20	22	25	27	30	32	34.6	37.4	40	45	50	55	60	65	70	75	80	m		
▲▲▲	25	▲	24	21.5	18.5	16.9	14.9	13.8	12.5	-12.5	11.6	10.1	8.9	7.9	7	6.3	5.6	5	5	5	5	5	t
50 m	3.1	▶	19.6	20	22	25	27	30	32	35.1	37.9	40	45	50	55	60	65	70	75	80	m		
▲▲▲	25	▲	24.4	21.8	18.8	17.2	15.1	14	12.5	-12.5	11.7	10.2	9.1	8.2	7.3	6.6	5.9	5.4	5	5	5	5	t
45 m	3.1	▶	19.7	20	22	25	27	30	32	35.4	38.2	40	45	50	55	60	65	70	75	80	m		
▲▲▲	25	▲	24.6	22.1	19	17.3	15.3	14.1	12.5	-12.5	11.9	10.4	9.3	8.4	7.5	6.8	6.1	5.5	5	5	5	5	t
40 m	3.1	▶	19.9	20	22	25	27	30	32	35.6	38.4	40	45	50	55	60	65	70	75	80	m		
▲▲▲	25	▲	24.8	22.2	19.1	17.5	15.4	14.3	12.5	-12.5	11.9	10.4	9.3	8.4	7.5	6.8	6.1	5.5	5	5	5	5	t
35 m	3.1	▶	20	22	25	27	30	32	35	38	40	45	50	55	60	65	70	75	80	m			
▲▲▲	25	▲	22.4	19.3	17.6	15.5	14.3	12.8	11.9	10.4	9.3	8.4	7.5	6.8	6.1	5.5	5	5	5	5	5	5	t



80 m	3.1	▶	145	15	17	20	22	25	26	26.5	30	32	35	40	45	50	55	60	65	70	75	80	m	
▲▲▲	25	▲	24	20.8	17.2	15.3	13.1	12.5	-12.5	10.7	9.9	8.9	7.5	6.4	5.5	4.8	4.2	3.8	3.3	2.95	2.65	2.65	2.65	t
75 m	3.1	▶	15.9	17	20	22	25	27	28.6	29.1	32	35	40	45	50	55	60	65	70	75	80	m		
▲▲▲	25	▲	23.1	19.1	17.1	14.7	13.4	12.5	-12.5	11.2	10	8.5	7.3	6.4	5.6	4.9	4.4	3.9	3.6	3.6	3.6	3.6	3.6	t
70 m	3.1	▶	18.4	20	22	25	27	30	33.3	33.9	35	40	45	50	55	60	65	70	75	80	m			
▲▲▲	25	▲	22.7	20.3	17.5	16	14.2	12.5	-12.5	12	10.3	8.9	7.8	6.9	6.2	5.5	5	5	5	5	5	5	5	t
65 m	3.1	▶	18.4	20	22	25	27	30	33.4	34	35	40	45	50	55	60	65	70	75	80	m			
▲▲▲	25	▲	22.7	20.4	17.6	16.1	14.2	12.5	-12.5	12.1	10.3	8.9	7.8	6.9	6.2	5.6	5	5	5	5	5	5	5	t
60 m	3.1	▶	19	20	22	25	27	30	32	34.5	35.1	40	45	50	55	60	65	70	75	80	m			
▲▲▲	25	▲	23.6	21.1	18.3	16.7	14.8	13.7	12.5	-12.5	10.7	9.3	8.1	7.2	6.5	5.8	5.2	4.7	4.3	4	4	4	4	t
55 m	3.1	▶	19.7	20	22	25	27	30	32	35.8	36.3	40	45	50	55	60	65	70	75	80	m			
▲▲▲	25	▲	24.5	22	19	17.4	15.4	14.3	12.5	-12.5	11.2	9.7	8.5	7.6	6.8	6.1	5.5	5	5	5	5	5	5	t
50 m	3.1	▶	19.9	20	22	25	27	30	32	36.2	36.8	40	45	50	55	60	65	70	75	80	m			
▲▲▲	25	▲	22.3	19.3	17.7	15.6	14.5	12.5	-12.5	11.3	9.8	8.7	7.8	7	6.3	5.7	5.1	4.6	4.2	3.8	3.3	2.95	2.65	t
45 m	3.1	▶	20.1	22	25	27	30	32	36.6	37.2	40	45	50	55	60	65	70	75	80	m				
▲▲▲	25	▲	22.6	19.5	17.8	15.8	14.6	12.5	-12.5	11.5	10	8.9	8	7.1	6.4	5.8	5.2	4.7	4.3	3.9	3.4	3	3	t
40 m	3.1	▶	20.2	22	25	27	30	32	36.8	37.4	40	45	50	55	60	65	70	75	80	m				
▲▲▲	25	▲	22.7	19.6	18	15.9	14.7	12.5	-12.5	11.5	10	8.9	8	7.1	6.4	5.8	5.2	4.7	4.3	3.9	3.4	3	3	t
35 m	3.1	▶	20.4	22	25	27	30	32	35	38	40	45	50	55	60	65	70	75	80	m				
▲▲▲	25	▲	22.9	19.8	18.1	16	14.8	13.3	12.5	11.5	10	8.9	8	7.1	6.4	5.8	5.2	4.7	4.3	3.9	3.4	3	3	t



FR

● Réactions en service  
■ Réactions hors service

A vide sans lest (ni train de transport) avec flèche et hauteur maximum.

Ht Hauteur maxi roulante

DE

● Reaktionskräfte in Betrieb  
■ Reaktionskräfte außer Betrieb

Ohne Last, Ballast (und Transportachse), mit Maximalausleger und Maximalhöhe.

Fahrbare max. Höhe

EN

● Reactions in service  
■ Reactions out of service

Without load, ballast (or transport axles), with maximum jib and maximum height.

Travelling maximum height

ES

● Reacciones en servicio  
■ Reacciones fuera de servicio

Sin carga, sin lastre, (ni tren de transporte), flecha y altura máxima.

Altura máxima móvil

IT

● Reazioni in servizio  
■ Reazioni fuori servizio

A vuoto, senza zavorra (ne assali di trasporto) con braccio massimo e altezza massima.

Altezza massima gru traslante

PT

● Reações em serviço  
■ Reações fora de serviço

Sem carga (nem trem de transporte)- sem lastro com lança e altura máximas.

Altura máxima sobre translação

RU

● Реакции при работе  
■ Реакции в покое

Вес без груза, балласта (или транспортных осей), с максимальной длиной стрелы и максимальной высотой.

Максимальная высота при движении крана по подкрановым путям

Lest de contre-flèche  
Gegenauslegerballast  
Counter-jib ballast  
Lastre de contra flecha  
Contrappeso  
Lastros da contra lança  
Балласт на консоли

MHZ 1

		4 000 kg - 6 000 kg	
		100 LVF - 150 LCC - 166 LBR	
▲▼▲▲			(kg)
80 m	24,3 m		30 000
75 m	24,3 m		28 000
70 m	24,3 m		28 000
65 m	24,3 m		26 000
60 m	24,3 m		22 000
55 m	24,3 m		20 000
50 m	20,8 m		26 000
45 m	20,8 m		22 000
40 m	20,8 m		20 000
35 m	20,8 m		16 000

Lest de base  
Grundballast  
Base ballast  
Lastre de base  
Zavorra di base  
Lastros da base  
Базовый балласт

MHZ 1

2,45 m	ZX 6830	H4 (m)	59,6	56,3	51,3	46,3	41,3	36,3	31,3	26,3	21,3	16,3	
			H3 (m)	171	161	151	131	121	111	101	101	101	101
		H3 (m)	53,2	49,9	46,6	41,6	36,6	31,6	26,6	21,6	16,6		
		H3 (t)	151	141	131	121	111	101	101	91	91		
2,45 m <td rowspan="2">Y 800 A</td> <td rowspan="2">H (m)</td> <td>71,2</td> <td>67,8</td> <td>62,8</td> <td>57,8</td> <td>52,8</td> <td>47,8</td> <td>42,8</td> <td>37,8</td> <td>32,8</td> <td>27,8</td> <td>22,8</td>	Y 800 A	H (m)	71,2	67,8	62,8	57,8	52,8	47,8	42,8	37,8	32,8	27,8	22,8
			H (t)	156	132	96	60	48	48	48	48	48	48
2,45 m <td rowspan="2">J 850 A</td> <td rowspan="2">H (m)</td> <td>87,5</td> <td>84,1</td> <td>80,8</td> <td>75,8</td> <td>70,8</td> <td>65,8</td> <td>60,8</td> <td>55,8</td> <td>50,8</td> <td>45,8</td> <td>40,8</td>	J 850 A	H (m)	87,5	84,1	80,8	75,8	70,8	65,8	60,8	55,8	50,8	45,8	40,8
			H (t)	204	180	144	108	72	48	12	12	12	12
2,50 m <td rowspan="2">X 80 A</td> <td rowspan="2">H (m)</td> <td>52,8</td> <td>47,02</td> <td>41,24</td> <td>35,46</td> <td>29,68</td> <td>23,9</td> <td></td> <td></td> <td></td> <td></td> <td></td>	X 80 A	H (m)	52,8	47,02	41,24	35,46	29,68	23,9					
			H (t)	108	108	108	108	108	108				
2,50 m <td rowspan="2">Y 80 A</td> <td rowspan="2">H (m)</td> <td>64,56</td> <td>58,78</td> <td>53,0</td> <td>47,22</td> <td>41,44</td> <td>35,66</td> <td>29,88</td> <td>24,1</td> <td></td> <td></td> <td></td>	Y 80 A	H (m)	64,56	58,78	53,0	47,22	41,44	35,66	29,88	24,1			
			H (t)	84	72	72	72	72	72	72	72		

Mécanismes  
Antriebe  
Mechanisms  
Mecanismos  
Meccanismi  
Mecanismos  
Механизмы

MHZ 1

MD 485 B M25 - 50 Hz						ch - PS	kW		
▲	150 LVF 63 GH Optima	m/min	0 → 42 → 72 → 144 → 196	0 → 21 → 36 → 72 → 98	150	110	1200 m	IEC 60204-32	
	150 LCC 63	m/min	46 → 56 → 70 → 92 → 110	23 → 28 → 35 → 46 → 55	150	110	461 m		
●	RVF 183 Optima +	tr/min U/min - rpm	0 → 0,8			3 x 12	3 x 9		400 V (+10% -10%) 50 Hz
■	10 DVF 10	m/min	0 → 64 (25 t)	0 → 100 (12,5 t)	0 → 110 (6,25 t)	10	7,4		
●	Y 800 A	RT584 A1 - 2V	13,5 - 27			8 x 7	8 x 5,2		kVA
●	J 850 A								150 LVF: 185 kVA 150 LCC: 185 kVA
●	ZX 6830 X 80 A Y 80 A	RT 664 A2B - 2V	16 - 32			6 x 7	6 x 5,2		
MD 485 B M25 - 60 Hz						ch - PS	kW		
▲	180 LVF 63 GH Optima	m/min	0 → 50 → 88 → 174 → 196	0 → 25 → 44 → 87 → 98	180	132	1200 m	IEC 60204-32	
	150 LCC 63	m/min	46 → 56 → 70 → 92 → 110	23 → 28 → 35 → 46 → 55	150	110	461 m		
●	RVF 183 Optima +	tr/min U/min - rpm	0 → 0,8			3 x 12	3 x 9		480 V (+6% -10%) 60 Hz
▲	166 LBR 63	m/min	4,6/46 7,2/72 11,4/114 18,2/182	2,3/23 3,6/36 5,7/57 9,1/91	166	122	633 m	kVA	
●	R 27 +	tr/min U/min - rpm	0 → 1			3 x 9	3 x 6,6		
■	10 DVF 10	m/min	LBR: 0 → 80 LVF - LCC: 0 → 64 (25 t) - 0 → 100 (12,5 t) - 0 → 110 (6,25 t)			10	7,4		180 LVF: 215 kVA 150 LCC: 215 kVA 166 LBR: 190 kVA
●	Y 800 A	RT584 A1 - 2V	16 - 32			8 x 8,4	8 x 6,2		
●	J 850 A								
●	ZX 6830 X 80 A Y 80 A	RT 664 A2B - 2V	19 - 38			6 x 8,4	6 x 6,2		

**FR**  
Levage  
Distribution  
Orientation  
Translation  
Nous consulter

**DE**  
Heben  
Katzfahren  
Schwenken  
Kranfahren  
Auf Anfrage

**EN**  
Hoisting  
Trolleying  
Slewing  
Travelling  
Consult us

**ES**  
Elevación  
Distribución  
Orientación  
Traslación  
Consultarnos

**IT**  
Sollevamento  
Distribuzione  
Rotazione  
Traslazione  
Consultateci

**PT**  
Elevação  
Distribuição  
Rotação  
Translação  
Consultar-nos

**RU**  
Подъем  
Перемещение каретки  
Поворот  
Перемещение крана  
Проконсультируйтесь у нас



Document commercial non contractuel. Pour toute information technique se référer à la notice correspondante.

Unverbindliches Vertriebsdokument. Für technische Informationen, siehe die entsprechenden Anweisungen.

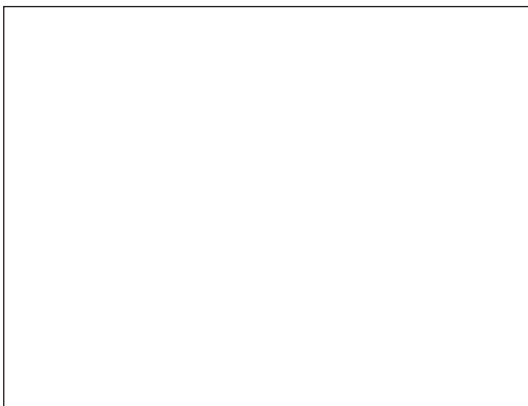
This commercial document is not legally binding. For any technical information, please refer to the corresponding instructions.

Documento comercial no contractual. Para cualquier información técnica, ver la noticia correspondiente.

Documento commerciale non vincolante, per tutte le informazioni tecniche fare riferimento al catalogo istruzioni.

Documento comercial não contratual. Para qualquer informação técnica complementar consultar as respectivas instruções.

Этот коммерческий документ не является юридически обязательным. Для получения технической информации, см. соответствующие инструкции.



**Manitowoc - Americas - World Headquarters**  
2400 S. 44th Street • Manitowoc • WI 54220 USA  
Tel: +1 920 684 4410 • Fax: +1 920 652 9778

**Manitowoc - Europe, Middle East & Africa**  
Ecully, France  
18, rue de Charbonnières B.P. 173 • 69132 ECULLY Cedex • FRANCE  
Tel: +33 (0)4 72 18 20 20 • Fax: +33 (0)4 72 18 20 00

**Manitowoc - Asia Pacific**  
16F Xu Hui Yuan Building,  
1089 Zhongshan No.2 Road (S) • Shanghai 200030 China  
Tel: +86 21 6457 0066 • Fax: +86 21 6457 4955