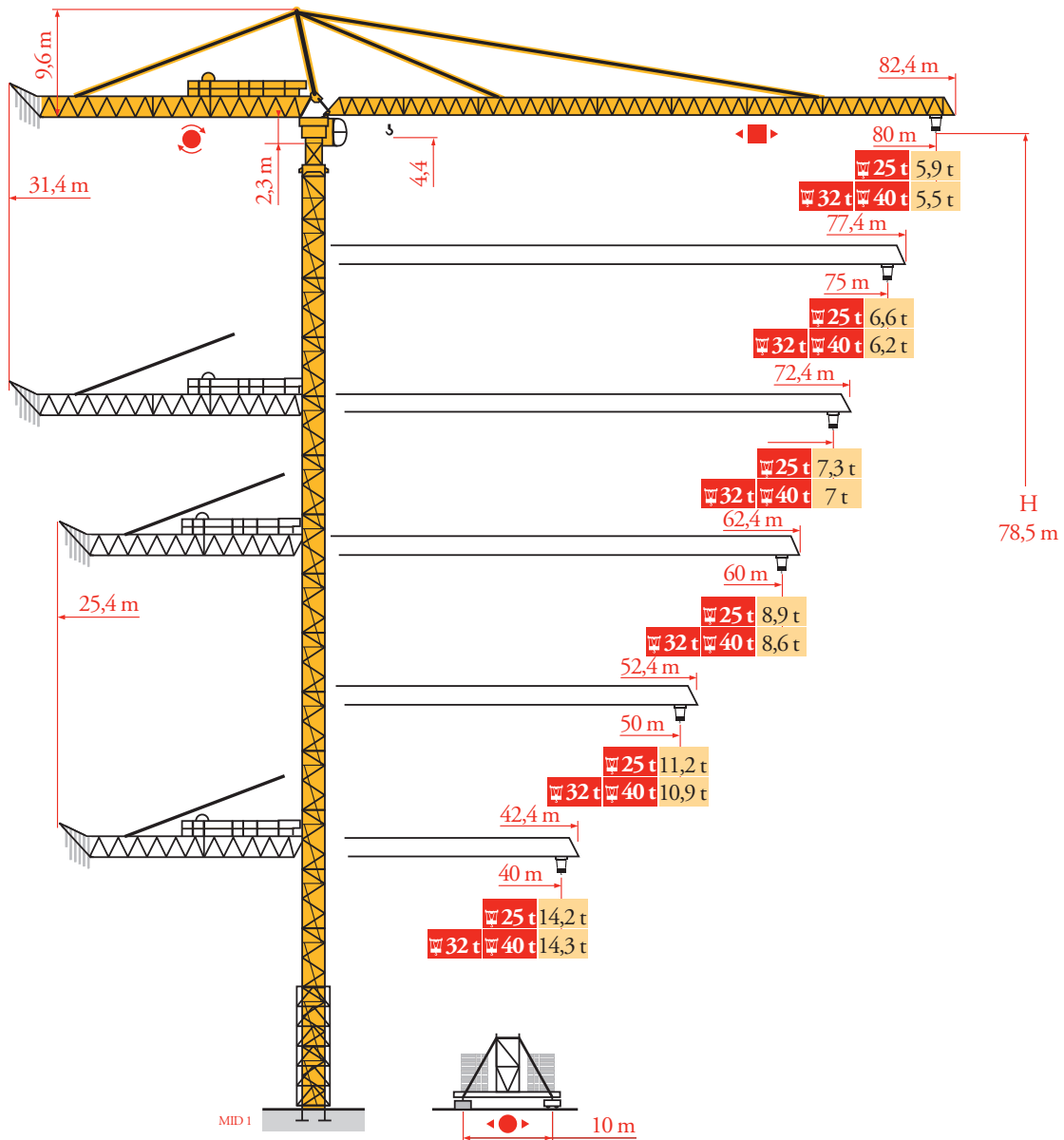
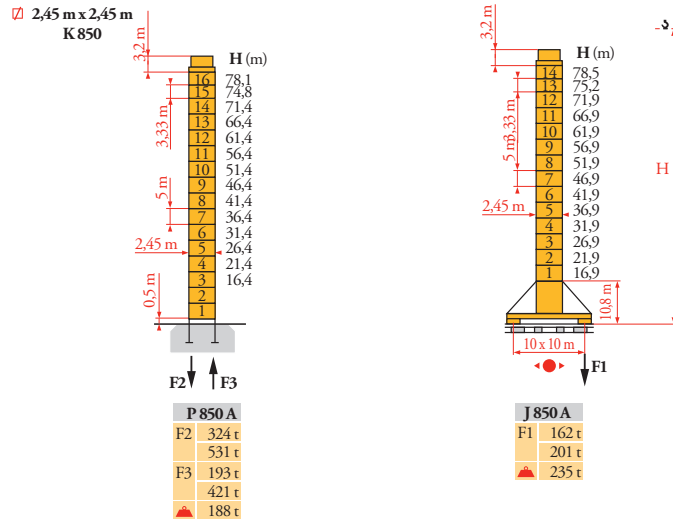


Potain MD 650



Mat / Réactions
 Maste / Eckdrücke
 Masts / Reactions
 Mástil / Reacciones
 Torre / Reazioni
 Tramo / Reações
 Композиции башни /
 Реакции

MD1



Courbes de charges

Lastkurven

Load diagrams

Curvas de cargas

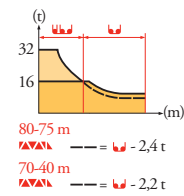
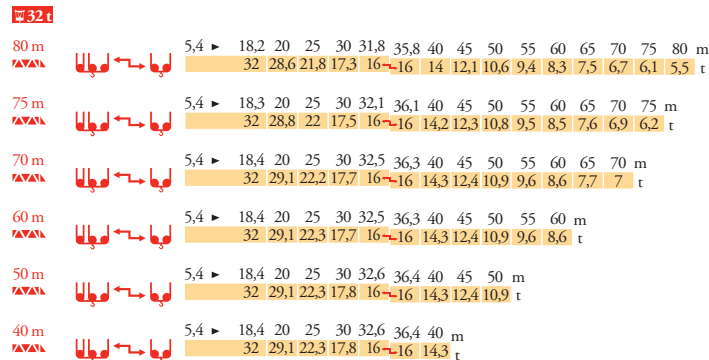
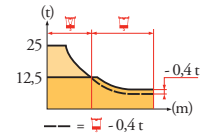
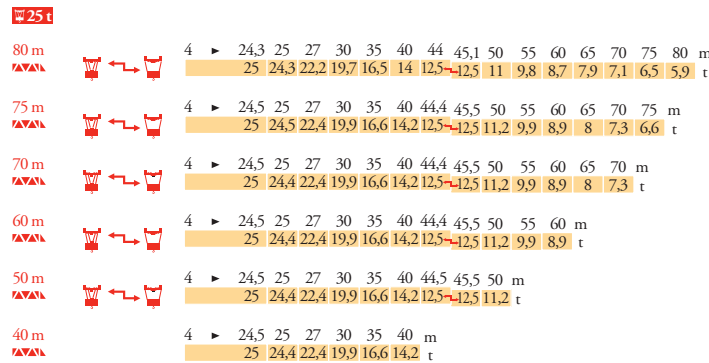
Curve di carico

Curva de cargas

Диаграммы

грузоподъемностей

MD1



FR

● Réactions en service
 ■ Réactions hors service
 A vide sans lest (ni train de transport) avec flèche et hauteur maximum

DE

Reaktionskräfte in Betrieb
 Reaktionskräfte außer Betrieb
 Ohne Last, Ballast (und Transportachse), mit Maximalausleger und Maximalhöhe

EN

Reactions in service
 Reactions out of service
 Without load, ballast (or transport axes), with maximum jib and maximum height

ES

Reacciones en servicio
 Reacciones fuera de servicio
 Sin carga, sin lastre, (ni tren de transporte), flecha y altura máxima

IT

Reazioni in servizio
 Reazioni fuori servizio
 A vuoto, senza zavorra (ne assali di trasporto) con braccio massimo e altezza massima

PT

Reações em serviço
 Reações fora de serviço
 Sem carga (nem trem de transporte)- sem lastro com lança e altura máximas

RU

Реакции при работе
 Реакции в покое
 Вес без груза, балласта (или транспортных осей), с максимальной длиной стрелы и максимальной высотой

Courbes de charges

Lastkurven

Load diagrams

Curvas de cargas

Curve di carico

Curva de cargas

Диаграммы

грузоподъемностей

MID 1

40 t

80 m		5,4 ▶ 15 20 25 26,8 29,6 35 40 45 50 55 60 65 70 75 80 m
		40 28,6 21,8 20 20 16,4 14 12,1 10,6 9,4 8,3 7,5 6,7 6,1 5,5 t

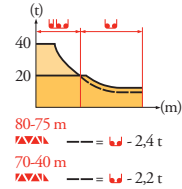
75 m		5,4 ▶ 15,1 20 25 27 29,8 35 40 45 50 55 60 65 70 75 m
		40 28,8 22 20 20 16,6 14,2 12,3 10,8 9,5 8,5 7,6 6,9 6,2 t

70 m		5,4 ▶ 15,1 20 25 27,3 29,9 35 40 45 50 55 60 65 70 m
		40 29,1 22,3 20 20 16,7 14,3 12,4 10,9 9,6 8,6 7,7 7 t

60 m		5,4 ▶ 15,1 20 25 27,3 29,9 35 40 45 50 55 60 m
		40 29,1 22,3 20 20 16,7 14,3 12,4 10,9 9,6 8,6 t

50 m		5,4 ▶ 15,2 20 25 27,3 30 35 40 45 50 m
		40 29,1 22,3 20 20 16,7 14,3 12,4 10,9 t

40 m		5,4 ▶ 15,2 20 25 27,3 30 35 40 m
		40 29,1 22,3 20 20 16,7 14,3 t



Lest de contre-flèche

Gegenauslegerballast

Counter-jib ballast

Lastre de contra flecha

Contrappeso

Lastros da contra lança

Балласт на консоли

MID 1

		5 900 kg - 4 200 kg - 2 800 kg		
		150 LCC	250 LCC	200 LBR
80 m	31,4 m	33 700	33 700	33 700
75 m	31,4 m	32 300	32 300	32 300
70 m	31,4 m	27 800	27 800	27 800
60 m	25,4 m	33 700	33 700	33 700
50 m	25,4 m	27 800	27 800	27 800
40 m	25,4 m	21 900	21 900	21 900

Lest de base

Grundballast

Base ballast

Lastre de base

Zavorra di base

Lastros da base

Базовый балласт

MID 1

	2,45 m	J 850 A		H (m)	78,5	75,2	71,9	66,9	61,9	56,9	51,9	46,9	41,9	36,9	31,9	26,9	21,9	16,9
				(t)	72	48	36	36	36	36	36	36	36	36	36	36	36	36

FR
 Nous consulter

DE
 Auf Anfrage

EN
 Consult us

ES
 Consultarnos







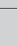






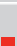






IT
 Consultateci

PT
 Consultar-nos

RU
 Проконсультируйтесь у нас

Mécanismes
Antriebe
Mechanisms
Mecanismos
Meccanismi
Mecanismos
Механизмы

MID 1

												ch - PS hp	kW			
	150 LCC 63	 25 t	m/min	46	56	70	92	110	23	28	35	46	55	150	110	461 m
		t	12,5	9,4	6,25	3,1	1,6	25	18,8	12,5	6,2	3,2				
	250 LCC 80	 32 t	m/min	52	68	86	108	122	26	34	43	54	61			
		t	16	12	8	4	2	32	24	16	8	4				
	250 LCC 100	 40 t	m/min	46	60	76	96	108	23	30	38	48	54	250	180	488 m
			t	20	15	10	5	2,5	40	30	20	10	5			
		15 DVF 16	 25 t	m/min	0 → 47 (25 t) - 0 → 63 (12,5 t) - 0 → 76 (6,25 t) - 0 → 100 (3,13 t)											
	 32 t	m/min	0 → 33 (32 t) - 0 → 50 (16 t) - 0 → 67 (8 t) - 0 → 100 (2 t)													
	 40 t	m/min	0 → 33 (40 t) - 0 → 50 (20 t) - 0 → 67 (10 t) - 0 → 100 (2,5 t)													
	200 LBR 100	 40 t	m/min	3,6/36	5,6/56	9/90	14,4/144	1,8/18	2,8/28	4,5/45	7,2/72	200	150	650 m		
		t	20	12,3	7,2	4	40	24,4	14,3	8						
	15 DVF 16	 40 t	m/min	0 → 50 (20 t) 0 → 67 (7,5 t) 0 → 100 (2,5 t)					0 → 33 (40 t) 0 → 67 (8,2 t) 0 → 100 (2,5 t)					15	11	
	RVF 192 Optima +	tr/min U/min rpm	0 → 0,6									2 x 15	2 x 11			
	J 850 A	m/min														
 IEC 60204-32				 kVA												
400 V (+10% -10%) 50 Hz / 480V (+6% -10%) 60Hz				150 LCC: 190 kVA 250 LCC: 350 kVA 200 LBR: 240 kVA												



FR

Léverage
Distribution
Orientation
Translation

DE

Heben
Katzfahren
Schwenken
Kranfahren

EN

Hoisting
Trolleying
Slewing
Travelling

ES

Elevación
Distribución
Orientación
Traslación

IT

Sollevarmento
Distribuzione
Rotazione
Traslazione

PT

Elevação
Distribuição
Rotação
Translação

RU

Подъем
Перемещение каретки
Поворот
Перемещение крана



Document commercial non contractuel. Pour toute information technique se référer à la notice correspondante.

Unverbindliches Vertriebsdokument. Für technische Informationen, siehe die entsprechenden Anweisungen.

This commercial document is not legally binding. For any technical information, please refer to the corresponding instructions.

Documento commercial no contractual. Para cualquier información técnica, ver la noticia correspondiente.

Documento commerciale non vincolante, per tutte le informazioni tecniche fare riferimento al catalogo istruzioni.

Documento comercial não contratual. Para qualquer informação técnica complementar consultar as respectivas instruções.

Этот коммерческий документ не является юридически обязательным. Для получения технической информации, см. соответствующие инструкции.

MD 650

Manitowoc - Americas - World Headquarters
2400 S. 44th Street • Manitowoc • WI 54220 USA
Tel: +1 920 684 4410 • Fax: +1 920 652 9778

Manitowoc - Europe, Middle East & Africa
Ecully, France
18, rue de Charbonnières B.P. 173 • 69132 ECULLY Cedex • FRANCE
Tel: +33 (0)4 72 18 20 20 • Fax: +33 (0)4 72 18 20 00

Manitowoc - Asia Pacific
16F Xu Hui Yuan Building,
1089 Zhongshan No.2 Road (S) • Shanghai 200030 China
Tel: +86 21 6457 0066 • Fax: +86 21 6457 4955

REF. 2009 36 MID 1