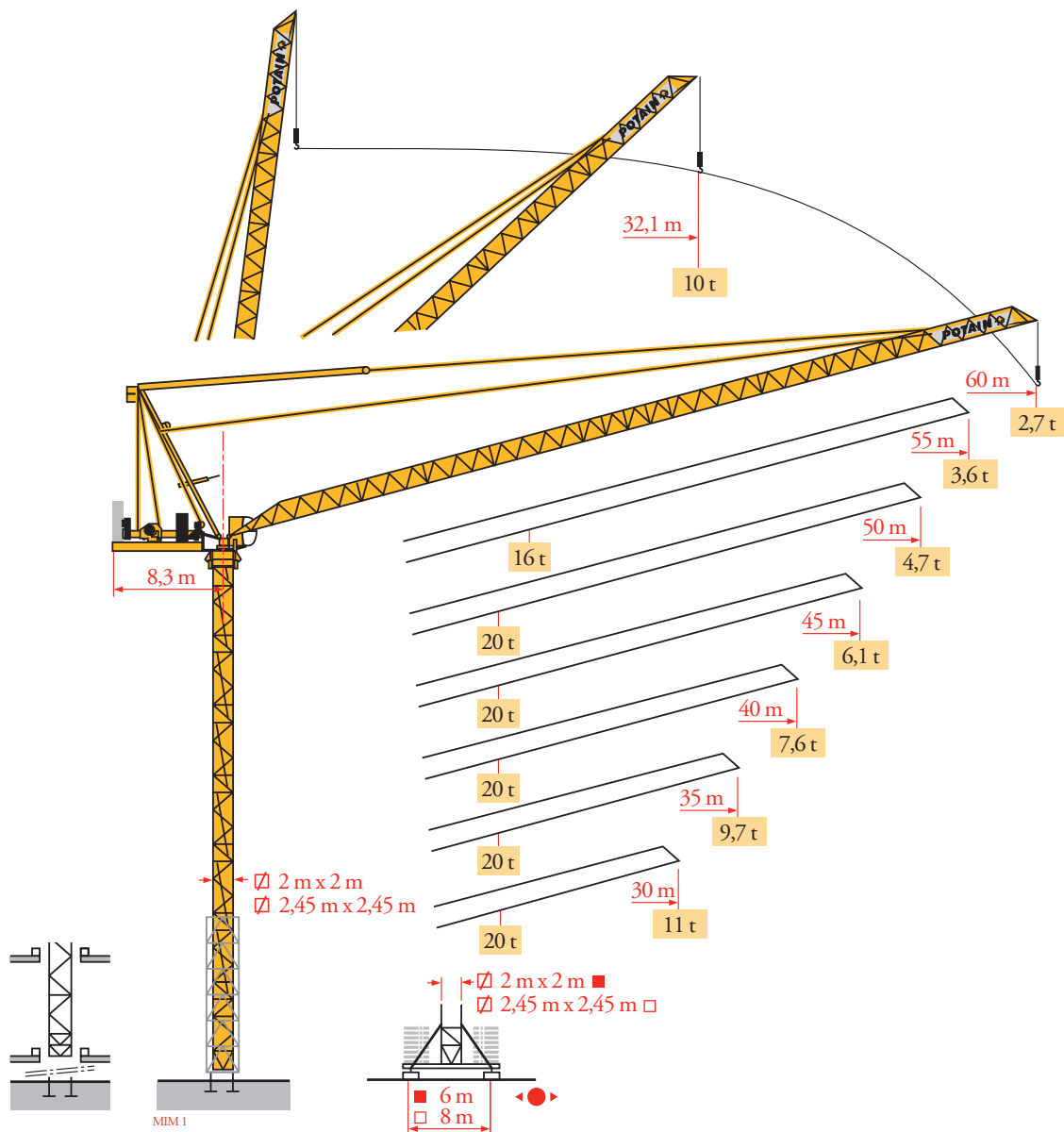


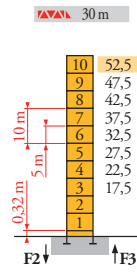
Potain MR 295 H20



Mat / Réactions
Maste / Eckdrücke
Masts / Reacciones
Mástil / Reacciones
Torre / Reazioni
Tramo / Reações
Композиции
башни / Реакции

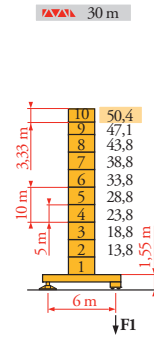
MM1

2 m



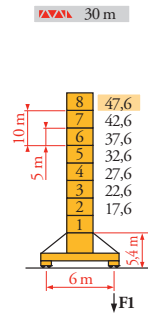
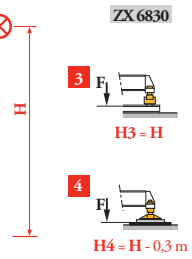
H (m)	5 m	3,33 m	
35 m	49,2	8	2
40 m	47,5	9	-
45 m	44,2	7	2
50 m	42,5	8	-
55 m	39,2	6	2
60 m	37,5	7	-

P 62 A	
F2	224 t
F3	176 t
	251 t
	77 t



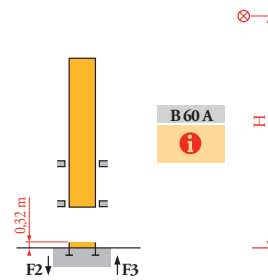
H (m)	5 m	3,33 m	
35 m	47,1	8	1
40 m	43,8	8	-
45 m	40,4	6	2
50 m	38,8	7	-
55 m	35,4	5	2
60 m	33,8	6	-

ZX 6830	
F1	133 t
	147 t
	89 t



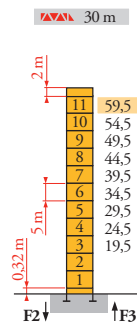
H (m)	5 m	3,33 m	
35 m	42,6	7	-
40 m	39,3	5	2
45 m	36	5	1
50 m	32,6	5	-
55 m	29,3	3	2
60 m	27,6	4	-

V 60 A	
F1	123 t
	130 t
	81 t



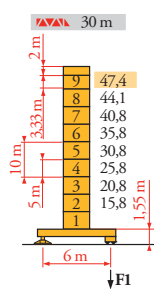
B 60 A	
F1	133 t

2,45 m



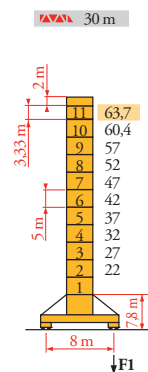
H (m)	5 m	3,33 m	
35 m	56,2	9	2
40 m	52,9	9	1
45 m	51,2	8	2
50 m	47,9	8	1
55 m	46,2	7	2
60 m	44,5	8	-

P 800 A	
F2	214 t
	335 t
F3	157 t
	278 t
	94 t



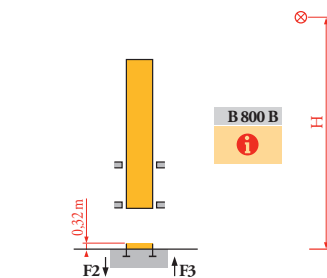
H (m)	5 m	3,33 m	
35 m	45,8	8	-
40 m	42,4	6	2
45 m	39,1	6	1
50 m	35,8	6	-
55 m	34,1	5	1
60 m	32,4	4	2

ZX 6830	
F1	132 t
	147 t
	94 t



H (m)	5 m	3,33 m	
35 m	60,4	9	1
40 m	57	9	-
45 m	53,7	7	2
50 m	50,4	7	1
55 m	48,7	6	2
60 m	47	7	-

Y 800 A	
F1	146 t
	195 t
	133 t



B 800 B	
F1	132 t

FR

Réactions en service
Réactions hors service

DE

Reaktionskräfte in Betrieb
Reaktionskräfte außer Betrieb

EN

Reactions in service
Reactions out of service

ES

Reacciones en servicio
Reacciones fuera de servicio

IT

Reazioni in servizio
Reazioni fuori servizio

PT

Reações em serviço
Reações fora de serviço

RU

Реакции при работе
Реакции в покое



A vide sans lest (ni train de transport) avec flèche et hauteur maximum.

Ohne Last, Ballast (und Transportachse), mit Maximalausleger und Maximalhöhe.

Without load, ballast (or train de transporte), with maximum jib and maximum height.

Sin carga, sin lastre, (ni tren de transporte), flecha y altura máxima.

A vuoto, senza zavorra (ne assali di trasporto) con braccio massimo e altezza massima.

Sem carga (nem trem de transporte) sem lastro com lança e altura máximas.

Вес без груза, балласта (или транспортных осей), с максимальной длиной стрелы и максимальной высотой.

Mécanismes
Antriebe
Mechanisms
Mecanismos
Meccanismi
Mecanismos
Механизмы

MIM1

MR 295 H20 50 Hz										ch - PS hp	kW		
	100 LVF 50 Optima	m/min	0 → 36 → 54 → 86 → 94	0 → 18 → 27 → 43 → 47	100	75	1018 m	IEC 60204-32	400 V (+10% -10%) 50 Hz		100 LVF : 220 kVA 150 LVF : 270 kVA 150 LCC : 270 kVA		
	150 LVF 50 GH Optima	m/min	0 → 54 → 92 → 180 → 244	0 → 27 → 46 → 90 → 122	150	110	1200 m						
	150 LCC 50	m/min	0 → 58 → 68 → 86 → 114 → 138	0 → 29 → 34 → 43 → 57 → 69	150	110	786 m						
		τ	10 7,5 5 2,5 1,25	20 15 10 5 2,5									
	100 VVF 40	m/min	1 min 40 s					100	75				
	RVF 182 Optima +	tr/min U/min - rpm	0 → 0,8					2 x 12	2 x 9				
	ZX 6830 RT 664 A2B 2V	m/min	16 - 32					6 x 7	6 x 5,2				
	V 60 A RT 544 A1 2V R ≥ 13 m	m/min	13,5 - 27					4 x 7	4 x 5,2				
	Y 800 A RT 584 A1 2V	m/min	13,5 - 27					8 x 7	8 x 5,2				

MR 295 H20 60 Hz										ch - PS hp	kW		
	100 LVF 50 Optima	m/min	0 → 36 → 54 → 86 → 94	0 → 18 → 27 → 43 → 47	100	75	1018 m	IEC 60204-32	480 V (+6% -10%) 60 Hz		100 LVF : 220 kVA 180 LVF : 300 kVA 150 LCC : 300 kVA		
	180 LVF 50 GH Optima	m/min	0 → 64 → 110 → 216 → 244	0 → 32 → 55 → 108 → 122	180	132	1200 m						
	150 LCC 50	m/min	0 → 58 → 68 → 86 → 114 → 138	0 → 29 → 34 → 43 → 57 → 69	150	110	786 m						
		τ	10 7,5 5 2,5 1,25	20 15 10 5 2,5									
	100 VVF 40	m/min	1 min 40 s					100	75				
	RVF 182 Optima +	tr/min U/min - rpm	0 → 0,8					2 x 12	2 x 9				
	ZX 6830 RT 664 A2B 2V	m/min	19 - 38					6 x 8,4	6 x 6,2				
	V 60 A RT 544 A1 2V R ≥ 13 m	m/min	16 - 32					4 x 8,4	4 x 6,2				
	Y 800 A RT 584 A1 2V	m/min	16 - 32					8 x 8,4	8 x 6,2				

FR

Levage
Relevage
Orientation
Translation
Nous consulter

DE

Heben
Ausleger-Einziehen
Schwenken
Kranfahren
Auf Anfrage

EN

Hoisting
Luffing
Slewing
Travelling
Consult us

ES

Elevación
Elevación de flecha
Orientación
Traslación
Consultarnos

IT

Sollevamento
Brandeggio
Rotazione
Traslazione
Consultateci

PT

Elevação
Inclinação da lança
Rotação
Translação
Consultar-nos

RU

Подъем
Подъем стрелы
Поворот
Перемещение крана
Проконсультируйтесь у нас



Document commercial non contractuel. Pour toute information technique se référer à la notice correspondante.

Unverbindliches Vertriebsdokument. Für technische Informationen, siehe die entsprechenden Anweisungen.

This commercial document is not legally binding. For any technical information, please refer to the corresponding instructions.

Documento comercial no contractual. Para cualquier información técnica, ver la noticia correspondiente.

Documento commerciale non vincolante, per tutte le informazioni tecniche fare riferimento al catalogo istruzioni.

Documento comercial não contractual. Para qualquer informação técnica complementar consultar as respectivas instruções.

Этот коммерческий документ не является юридически обязательным. Для получения технической информации, см. соответствующие инструкции.

Manitowoc

Manitowoc - Americas - World Headquarters
2400 S. 44th Street • Manitowoc • WI 54220 USA
Tel: +1 920 684 4410 • Fax: +1 920 652 9778

Manitowoc - Europe, Middle East & Africa
Ecully, France
18, rue de Charbonnières B.P. 173 • 69132 ECULLY Cedex • FRANCE
Tel: +33 (0)4 72 18 20 20 • Fax: +33 (0)4 72 18 20 00

Manitowoc - Asia Pacific
16F Xu Hui Yuan Building,
1089 Zhongshan No.2 Road (S) • Shanghai 200030 China
Tel: +86 21 6457 0066 • Fax: +86 21 6457 4955

MR 295 H20

REF. 2009 36 MIM1