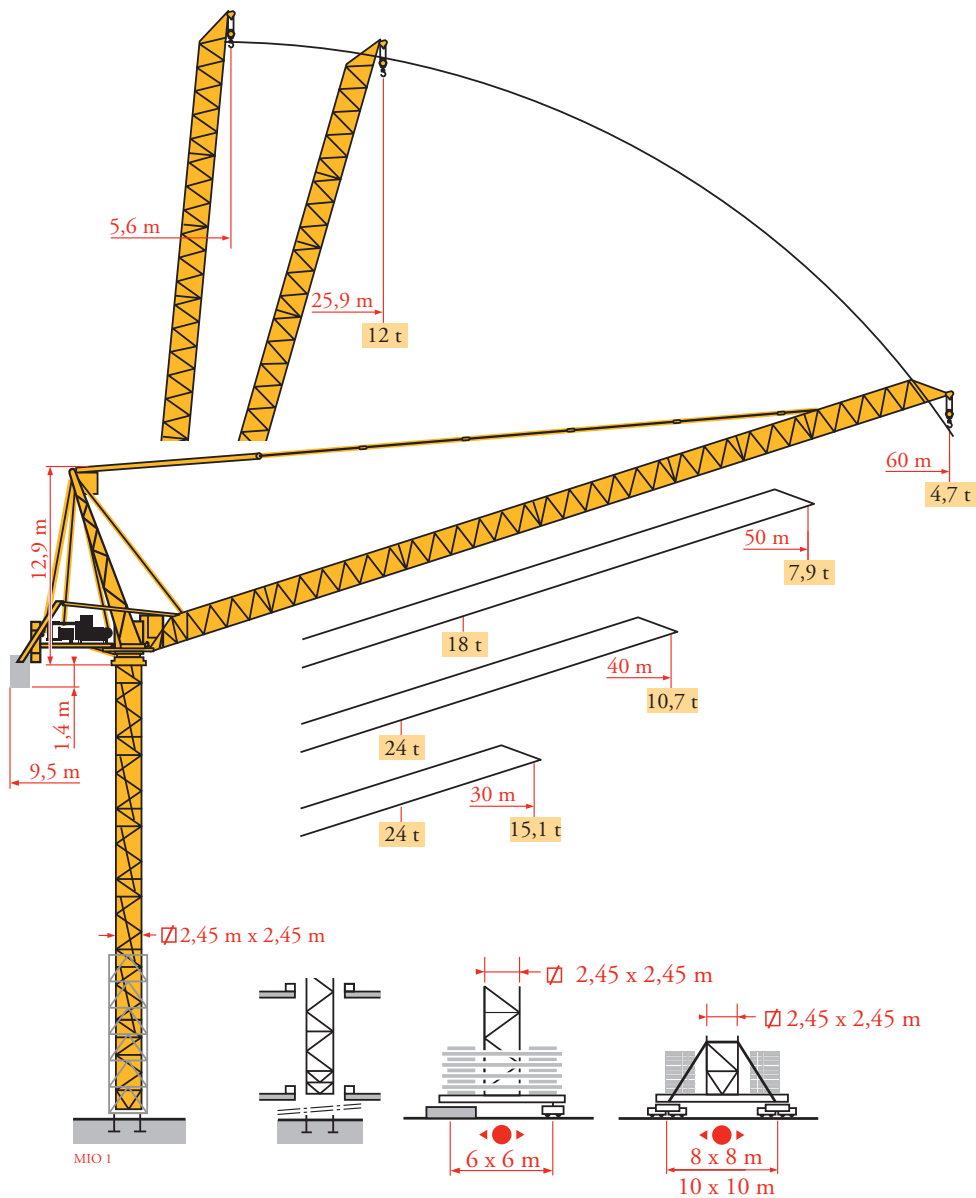


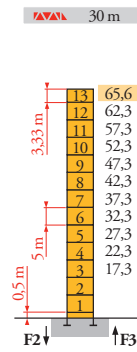
# Potain MR 405B H24



Mat / Réactions  
 Maste / Eckdrücke  
 Masts / Reações  
 Mástil /  
 Reacciones  
 Torre / Reazioni  
 Tramo / Reações  
 Композиции  
 башни / Реакции

MIO1

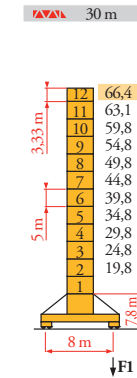
2,45 m  
 30 m ⇒ 60 m



H (m)	5 m	3,33 m
30 m	65,6	12
40 m	62,3	12
50 m	57,3	11
60 m	52,3	10

**P 800 A**

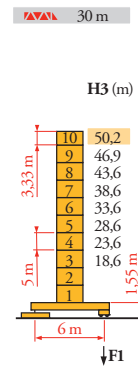
- F2 ● 219 t
- 395 t
- F3 ● 137 t
- 323 t
- ▲ 104 t



H (m)	5 m	3,33 m
30 m	66,4	10
40 m	63,1	10
50 m	58,1	9
60 m	53,1	8

**Y 800 A**

- F1 ● 154 t
- 197 t
- ▲ 139 t

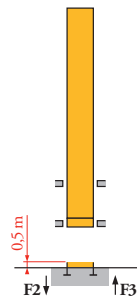


H3 (m)	H4 (m)	5 m	3,33 m
30 m	50,2	-	8
40 m	46,9	-	8
50 m	45,2	46,6	7
60 m	40,2	40	6

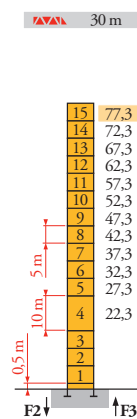
**ZX 6830**

- F1 ● 135 t
- 141 t
- ▲ 105 t

**ZX 6830**



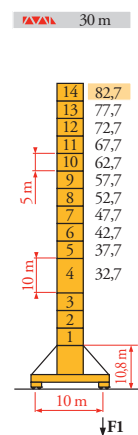
**B 800 B**



H (m)	10 m	5 m	3,33 m
30 m	77,3	1	14
40 m	74	1	12
50 m	69	1	11
60 m	64	1	10

**P 850 A**

- F2 ● 252 t
- 583 t
- F3 ● 163 t
- 459 t
- ▲ 118 t



H (m)	10 m	5 m	3,33 m
30 m	82,7	1	13
40 m	79,4	1	11
50 m	74,4	1	10
60 m	71,1	1	10

**J 850 A**

- F1 ● 170 t
- 241 t
- ▲ 173 t

**FR**

- Réactions en service
- Réactions hors service
- ▲ A vide sans lest (ni train de transport) avec flèche et hauteur maximum
- i Nous consulter

**DE**

- Reaktionskräfte in Betrieb
- Reaktionskräfte außer Betrieb
- ▲ Ohne Last, Ballast (und Transportachse), mit Maximalausleger und Maximalhöhe
- i Auf Anfrage

**EN**

- Reactions in service
- Reactions out of service
- ▲ Without load, ballast (or train of transport axes), with maximum jib and maximum height
- i Consult us

**ES**

- Reacciones en servicio
- Reacciones fuera de servicio
- ▲ Sin carga, sin lastre, (ni tren de transporte), flecha y altura máxima
- i Consultarnos

**IT**

- Reazioni in servizio
- Reazioni fuori servizio
- ▲ A vuoto, senza zavorra (ne assali di trasporto) con braccio massimo e altezza massima
- i Consultateci

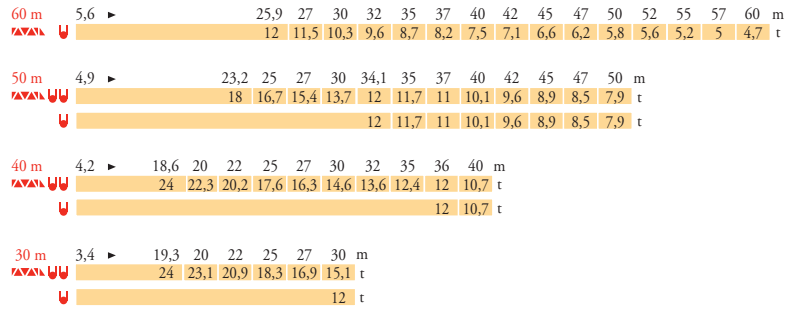
**PT**

- Reações em serviço
- Reações fora de serviço
- ▲ Sem carga (nem trem de transporte)- sem lastro com lança e altura máximas
- i Consultar-nos

**RU**

- Реакции при работе
- Реакции в покое
- ▲ Вес без груза, балласта (или транспортных осей), с максимальной длиной стрелы и максимальной высотой
- i Проконсультируйтесь у нас

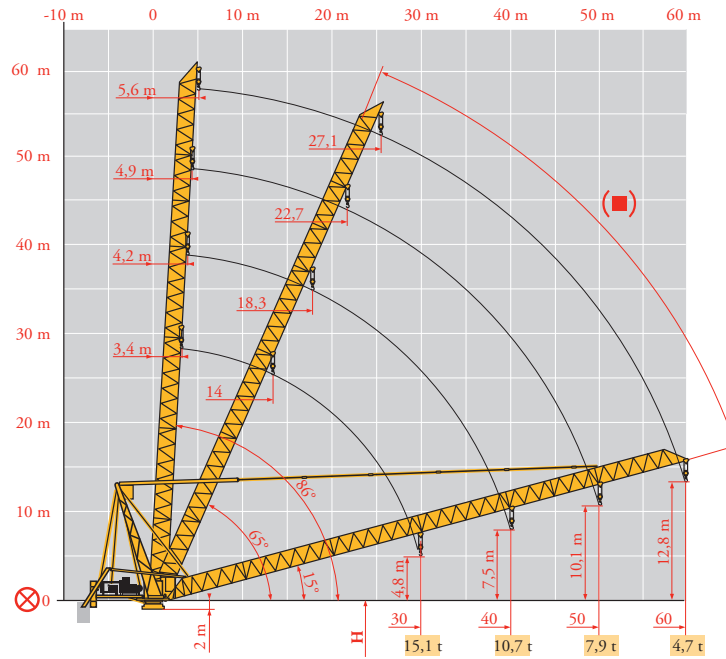
Courbes de charges  
 Lastkurven  
 Load diagrams  
 Curvas de cargas  
 Curve di carico  
 Curva de cargas  
 Диаграммы  
 грузоподъемностей



MIO 1

Flèche relevée  
 Ausleger in Steilstellung  
 Luffing jib  
 Flecha izada  
 Braccio impennato  
 Lança inclinada  
 Маховая стрела

MIO 1



- |   |                                      |                                   |                              |   |                                    |   |                                 |
|---|--------------------------------------|-----------------------------------|------------------------------|---|------------------------------------|---|---------------------------------|
| ⊗ | <b>FR</b><br>Axe articulation flèche | <b>DE</b><br>Ausleger-gelenkachse | <b>EN</b><br>Jib hinge shaft | <b>ES</b><br>Eje articulación de flecha | <b>IT</b><br>Asse cerniera braccio | <b>PT</b><br>Eixo de articulação da lança | <b>RU</b><br>Ось шарнира стрелы |
| ■ | Position girouette                   | Windfreistellung                  | Weathervaning position       | Posición eleta                          | Libera rotazione                   | Posição em catavento                      | Флюгирование                    |

Mécanismes  
Antriebe  
Mechanisms  
Meccanismi  
Mecanismos  
Механизмы

MIO1

MR 405 B H24 - 50 Hz			U				UU				ch - PS hp	kW			
	90 LBR 60 L910	m/min	2,8/28	4,4/44	7/70	11/111	1,4/14	2,2/22	3,5/35	5,5/55	90	66	910 m		
		t	12	7,3	4,2	2,25	24	14,6	8,4	4,5					
	62 VBR	tr/min U/min - rpm	2 min 48 s										62	45	
	R - 8,8	m/min	0 → 0,67										2 x 6	2 x 4,4	
	Y800 A RT584 A1 - 2V	m/min	13,5 - 27										8 x 7	8 x 5,2	
	J 850 A														
	ZX 6830 RT 664 A2B - 2V	m/min	16 - 32										6 x 7	6 x 5,2	
	IEC 60204-32	400 V (+10% -10%) 50Hz / 480V (+6% -10%) 60Hz					170 kVA								

MR 405 B H24 - 60 Hz			U				UU				ch - PS hp	kW			
	108 LBR 60 L910	m/min	3,3/33	5,3/53	8,4/84	13,3/133	1,6/16,5	2,7/26,5	4,2/42	6,7/67	108	79	910 m		
		t	12	7,4	4,2	2,25	24	14,8	8,4	4,5					
	74 VBR	tr/min U/min - rpm	2 min 20 s										74	54	
	R - 10,5	m/min	0 → 0,8										2 x 7,2	2 x 5,3	
	Y800 A RT584 A1 - 2V	m/min	16 - 32										8 x 8,4	8 x 6,2	
	J 850 A														
	ZX 6830 RT 664 A2B - 2V	m/min	19 - 38										6 x 8,4	6 x 6,2	
	IEC 60204-32	400 V (+10% -10%) 50Hz / 480V (+6% -10%) 60Hz					205 kVA								

	<b>FR</b>	Levage	<b>DE</b>	Heben	<b>EN</b>	Hoisting	<b>ES</b>	Elevación	<b>IT</b>	Sollevamento	<b>PT</b>	Elevação	<b>RU</b>	Подъем
		Distribution		Katzfahren		Trolleying		Distribución		Ditribuzione		Distribuição		Перемещение каретки
		Orientation		Schwenken		Slewing		Orientación		Rotazione		Rotação		Поворот
		Translation		Kranfahren		Travelling		Traslación		Traslazione		Translação		Перемещение крана



Document commercial non contractuel. Pour toute information technique se référer à la notice correspondante.

Unverbindliches Vertriebsdokument. Für technische Informationen, siehe die entsprechenden Anweisungen.

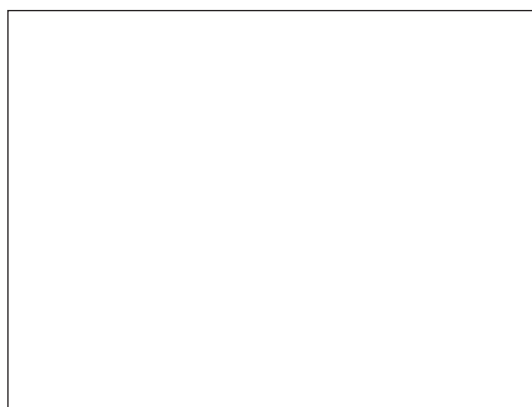
This commercial document is not legally binding. For any technical information, please refer to the corresponding instructions.

Documento commercial no contractual. Para cualquier información técnica, ver la noticia correspondiente.

Documento commerciale non vincolante, per tutte le informazioni tecniche fare riferimento al catalogo istruzioni.

Documento comercial não contratual. Para qualquer informação técnica complementar consultar as respectivas instruções.

Этот коммерческий документ не является юридически обязательным. Для получения технической информации, см. соответствующие инструкции.



MR 405B H24



**Manitowoc - Americas - World Headquarters**  
2400 S. 44th Street • Manitowoc • WI 54220 USA  
Tel: +1 920 684 4410 • Fax: +1 920 652 9778

**Manitowoc - Europe, Middle East & Africa**  
Ecully, France  
18, rue de Charbonnières B.P. 173 • 69132 ECULLY Cedex • FRANCE  
Tel: +33 (0)4 72 18 20 20 • Fax: +33 (0)4 72 18 20 00

**Manitowoc - Asia Pacific**  
16F Xu Hui Yuan Building,  
1089 Zhongshan No.2 Road (S) • Shanghai 200030 China  
Tel: +86 21 6457 0066 • Fax: +86 21 6457 4955

REF. 2009 36 MIO 1