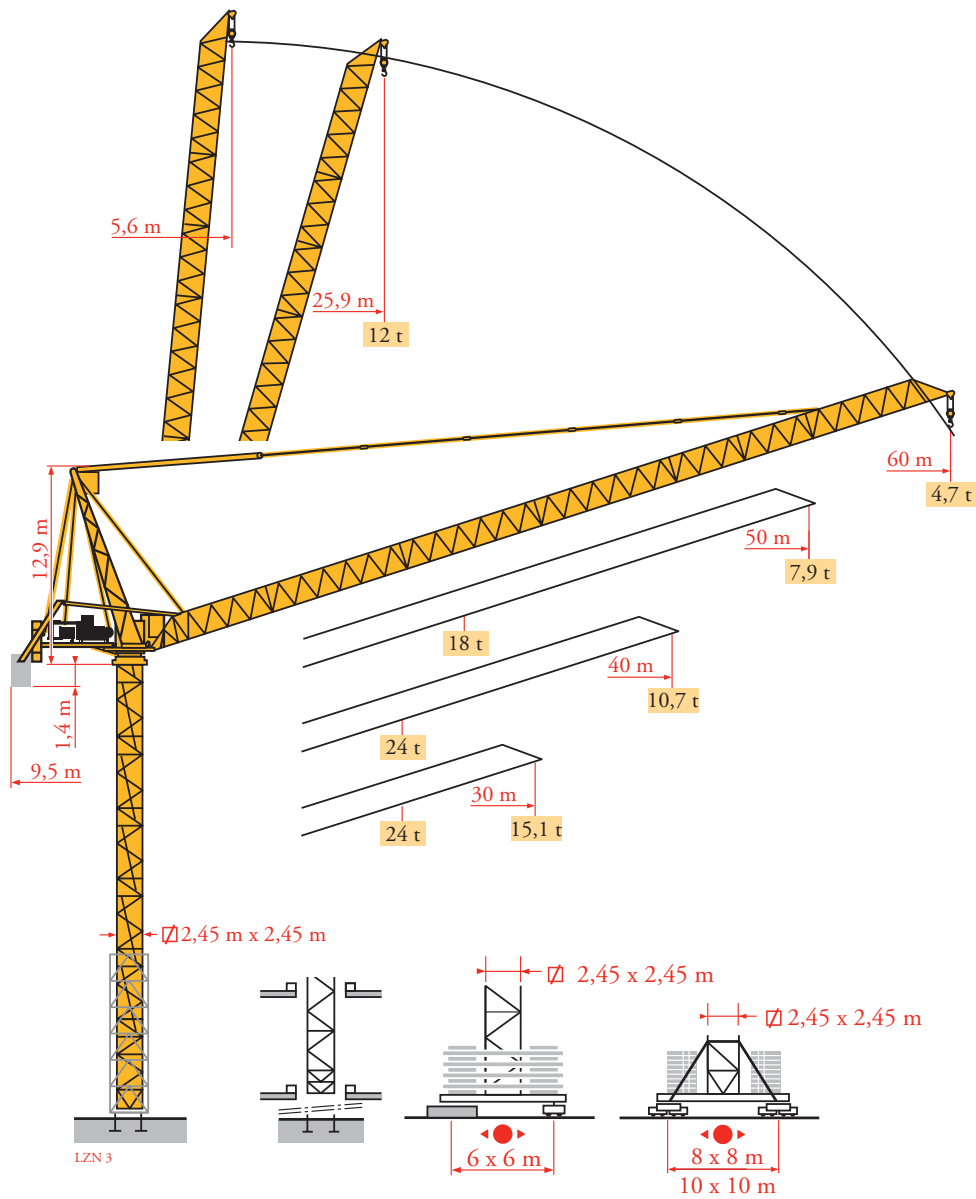


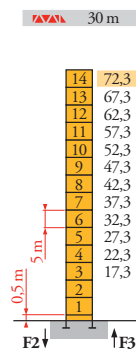
Potain MR 405B H24



Mat / Réactions
 Maste / Eckdrücke
 Masts / Reactions
 Mástil /
 Reacciones
 Torre / Reazioni
 Tramo / Reações
 Композиции
 башни / Реакции

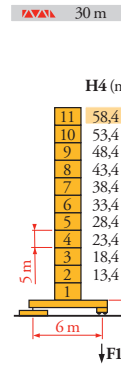
L2N 5

2,45 m
 30 m ⇒ 60 m



H (m)	5 m	3,33 m
30 m	14	-
40 m	12	2
50 m	11	2
60 m	10	2

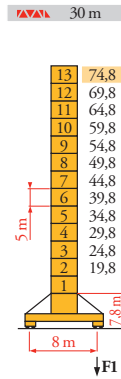
P 800 A
 F2 ● 227 t
 ■ 360 t
 F3 ● 153 t
 ■ 292 t
 104 t



H4 (m)	H3 (m)	5 m	3,33 m
30 m	58,4	-	11
40 m	53,4	-	10
50 m	51,7	-	9
60 m	48,4	-	8

ZX 6830
 F1 ● 147 t
 ■ 177 t
 106 t

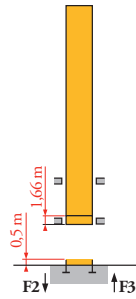
ZX 6830



H (m)	5 m	3,33 m
30 m	13	-
40 m	12	-
50 m	10	2
60 m	9	2

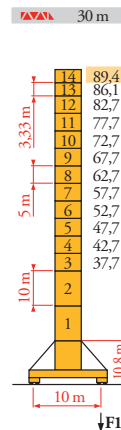
Y 800 A
 F1 ● 160 t
 ■ 202 t
 138 t

B 800 B
 i



H (m)	10 m	5 m	3,33 m
30 m	84	2	11
40 m	80,6	2	11
50 m	75,6	2	10
60 m	70,6	2	9

P 850 A
 F2 ● 274 t
 ■ 505 t
 F3 ● 184 t
 ■ 423 t
 120 t



H (m)	10 m	5 m	3,33 m
30 m	89,4	2	10
40 m	86,1	2	10
50 m	82,7	2	10
60 m	79,4	2	8

J 850 A
 F1 ● 172 t
 ■ 252 t
 173 t

FR

- Réactions en service
- Réactions hors service

A vide sans lest (ni train de transport) avec flèche et hauteur maximum

i

Nous consulter

DE

- Reaktionskräfte in Betrieb
- Reaktionskräfte außer Betrieb

Ohne Last, Ballast (und Transportachse), mit Maximalausleger und Maximalhöhe

Auf Anfrage

EN

- Reactions in service
- Reactions out of service

Without load, ballast (or transport axles), with maximum jib and maximum height

Consult us

ES

- Reacciones en servicio
- Reacciones fuera de servicio

Sin carga, sin lastre, (ni tren de transporte), flecha y altura máxima

Consultarnos

IT

- Reazioni in servizio
- Reazioni fuori servizio

A vuoto, senza zavorra (ne assali di trasporto) con braccio massimo e altezza massima

Consultateci

PT

- Reações em serviço
- Reações fora de serviço

Sem carga (nem trem de transporte)- sem lastro com lança e altura máximas

Consultar-nos

RU

- Реакции при работе
- Реакции в покое

Вес без груза, балласта (или транспортных осей), с максимальной длиной стрелы и максимальной высотой

Проконсультируйтесь у нас

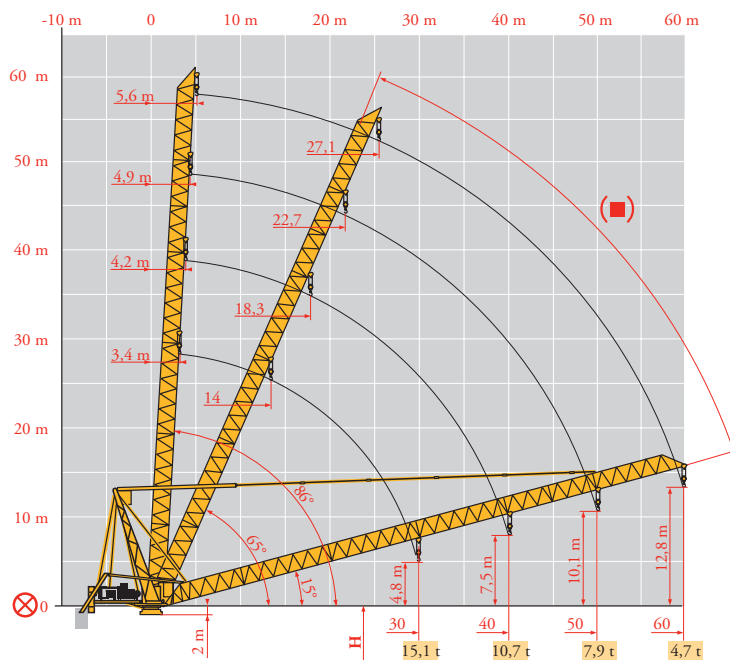
Courbes de charges
 Lastkurven
 Load diagrams
 Curvas de cargas
 Curve di carico
 Curva de cargas
 Диаграммы
 грузоподъемностей

LZN 3

60 m	5,6	▶	25,9	27	30	32	35	37	40	42	45	47	50	52	55	57	60 m
			12	11,5	10,3	9,6	8,7	8,2	7,5	7,1	6,6	6,2	5,8	5,6	5,2	5	4,7 t
50 m	4,9	▶	23,2	25	27	30	34,1	35	37	40	42	45	47	50 m			
			18	16,7	15,4	13,7	12	11,7	11	10,1	9,6	8,9	8,5	7,9 t			
40 m	4,2	▶	18,6	20	22	25	27	30	32	35	36	40 m					
			24	22,3	20,2	17,6	16,3	14,6	13,6	12,4	12	10,7 t					
30 m	3,4	▶	19,3	20	22	25	27	30 m									
			24	23,1	20,9	18,3	16,9	15,1 t									

Flèche relevée
 Ausleger in Steilstellung
 Luffing jib
 Flecha izada
 Braccio impennato
 Lança inclinada
 Маховая стрела

LZN 3



- | | | | | | | | |
|--|--------------------------------------|-----------------------------------|------------------------------|---|------------------------------------|---|---------------------------------|
| | FR
Axe articulation flèche | DE
Ausleger-gelenkachse | EN
Jib hinge shaft | ES
Eje articulación de flecha | IT
Asse cerniera braccio | PT
Eixo de articulação da lança | RU
Ось шарнира стрелы |
| | Position girouette | Windfreistellung | Weathervaning position | Posición eleta | Libera rotazione | Posição em catavento | Флюгирование |

Mécanismes
Antriebe
Mechanisms
Mecanismos
Meccanismi
Mecanismos
Механизмы

LZN 5

MR 405 B H24 - 50 Hz			U				UU				ch - PS hp	kW		
	90 LBR 60 L910	m/min t	2,8/28 12	4,4/44 7,3	7/70 4,2	11/111 2,25	1,4/14 24	2,2/22 14,6	3,5/35 8,4	5,5/55 4,5	90	66	910 m	
	62 VBR	U/min - rpm	2 min 48 s									62	45	
	R - 8,8	m/min	0 → 0,67									2 x 6	2 x 4,4	
	Y 800 A RT584 A1 - 2V	m/min	13,5 - 27									8 x 7	8 x 5,2	
	J 850 A													
	ZX 6830 RT 664 A2B - 2V	m/min	16 - 32									6 x 7	6 x 5,2	
CEI 38	IEC 38	400 V (+6% -10%)		170 kVA										

MR 405 B H24 - 60 Hz			U				UU				ch - PS hp	kW		
	108 LBR 60 L910	m/min t	3,3/33 12	5,3/53 7,4	8,4/84 4,2	13,3/133 2,25	1,6/16,5 24	2,7/26,5 14,8	4,2/42 8,4	6,7/67 4,5	108	79	910 m	
	74 VBR	U/min - rpm	2 min 20 s									74	54	
	R - 10,5	m/min	0 → 0,8									2 x 7,2	2 x 5,3	
	Y 800 A RT584 A1 - 2V	m/min	16 - 32									8 x 8,4	8 x 6,2	
	J 850 A													
	ZX 6830 RT 664 A2B - 2V	m/min	19 - 38									6 x 8,4	6 x 6,2	
CEI 38	IEC 38	480 V (+6% -10%)		205 kVA										

	FR	Levage	DE	Heben	EN	Hoisting	ES	Elevación	IT	Sollevamento	PT	Elevação	RU	Подъем
		Distribution		Katzfahren		Trolleying		Distribución		Distribuzione		Distribuição		Перемещение каретки
		Orientation		Schwenken		Slewing		Orientación		Rotazione		Rotação		Поворот
		Translation		Kranfahren		Travelling		Traslación		Traslazione		Translação		Перемещение крана



Document commercial non contractuel. Pour toute information technique se référer à la notice correspondante.

Unverbindliches Vertriebsdokument. Für technische Informationen, siehe die entsprechenden Anweisungen.

This commercial document is not legally binding. For any technical information, please refer to the corresponding instructions.

Documento commercial no contractual. Para cualquier información técnica, ver la noticia correspondiente.

Documento commerciale non vincolante, per tutte le informazioni tecniche fare riferimento al catalogo istruzioni.

Documento comercial não contratual. Para qualquer informação técnica complementar consultar as respectivas instruções.

Этот коммерческий документ не является юридически обязательным. Для получения технической информации, см. соответствующие инструкции.



Manitowoc - Americas - World Headquarters
2400 S. 44th Street • Manitowoc • WI 54220 USA
Tel: +1 920 684 4410 • Fax: +1 920 652 9778

Manitowoc - Europe, Middle East & Africa
Manitowoc France SAS
18, rue de Charbonnières B.P. 173 • 69132 ECULLY Cedex • FRANCE
Tel: +33 (0)4 72 18 20 20 • Fax: +33 (0)4 72 18 20 00

Manitowoc - Asia Pacific
16F Xu Hui Yuan Building,
1089 Zhongshan No.2 Road (S) • Shanghai 200030 China
Tel: +86 21 6457 0066 • Fax: +86 21 6457 4955

MR 405B H24

REF. 2003 48 LZN 6