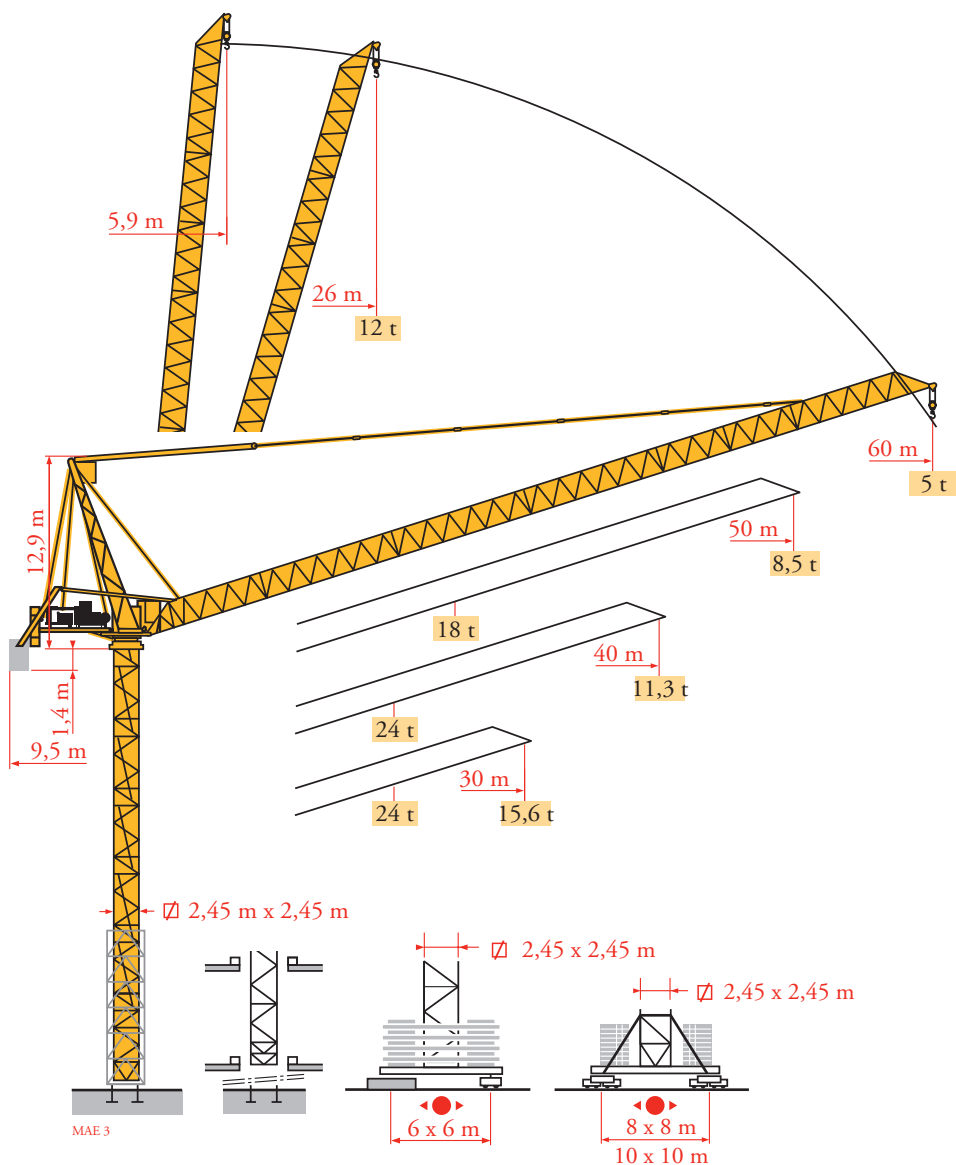


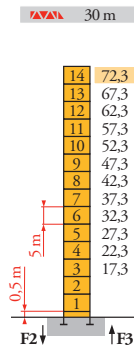
# Potain MR 415 H24



Mat / Réactions  
 Maste / Eckdrücke  
 Masts / Reacciones  
 Mástil / Reacciones  
 Torre / Reazioni  
 Tramo / Reacções  
 Композиции башни /  
 Реакции

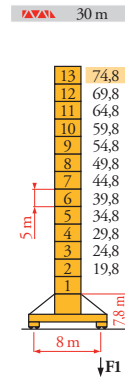
MAE 6

2,45 m  
 30 m = 60 m



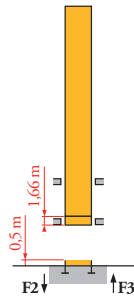
H (m)	5 m	3,33 m
30 m	72,3	14
40 m	69	12
50 m	64	11
60 m	59	10

**P 800 A**  
 F2 ● 227 t  
 ■ 360 t  
 F3 ● 153 t  
 ■ 292 t  
 ■ 104 t

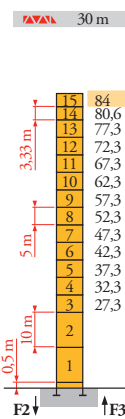


H (m)	5 m	3,33 m
30 m	74,8	13
40 m	69,8	12
50 m	66,4	10
60 m	61,4	9

**Y 800 A**  
 F1 ● 160 t  
 ■ 202 t  
 ■ 138 t

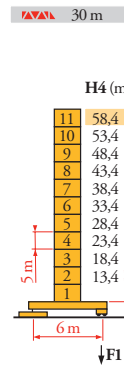


**B 800 B**  
 i



H (m)	10 m	5 m	3,33 m
30 m	84	2	11
40 m	80,6	2	11
50 m	75,6	2	10
60 m	70,6	2	9

**P 850 A**  
 F2 ● 274 t  
 ■ 505 t  
 F3 ● 184 t  
 ■ 423 t  
 ■ 120 t



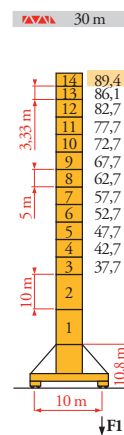
H4 (m)	H3 (m)	5 m	3,33 m
30 m	58,4	-	11
40 m	53,4	-	10
50 m	51,7	-	9
60 m	48,4	-	8

**ZX 6830**  
 F1 ● 147 t  
 ■ 177 t  
 ■ 106 t

**ZX 6830**

3 F1 H = H3

4 F1 H = H4



H (m)	10 m	5 m	3,33 m
30 m	89,4	2	10
40 m	86,1	2	10
50 m	82,7	2	10
60 m	79,4	2	8

**J 850 A**  
 F1 ● 172 t  
 ■ 252 t  
 ■ 173 t

- FR** Réactions en service
  - DE** Reaktionskräfte in Betrieb
  - EN** Reactions in service
  - ES** Reacciones en servicio
  - IT** Reazioni in servizio
  - PT** Reacções em serviço
  - RU** Реакции при работе
- FR** Réactions hors service
  - DE** Reaktionskräfte außer Betrieb
  - EN** Reactions out of service
  - ES** Reacciones fuera de servicio
  - IT** Reazioni fuori servizio
  - PT** Reacções fora de serviço
  - RU** Реакции в покое
- FR** A vide sans lest (ni train de transport) avec flèche et hauteur maximum
  - DE** Ohne Last, Ballast (und Transportachse), mit Maximalausleger und Maximalhöhe
  - EN** Without load, ballast (or transport axles), with maximum jib and maximum height
  - ES** Sin carga, sin lastre, (ni tren de transporte), flecha y altura máxima
  - IT** A vuoto, senza zavorra (ne assali di trasporto) con braccio massimo e altezza massima
  - PT** Sem carga (nem trem de transporte)- sem lastro com lança e altura máximas
  - RU** Вес без груза, балласта (или транспортных осей), с максимальной длиной стрелы и максимальной высотой
- FR** Nous consulter
  - DE** Auf Anfrage
  - EN** Consult us
  - ES** Consultarnos
  - IT** Consultateci
  - PT** Consultar-nos
  - RU** Проконсультируйтесь у нас



Mécanismes  
Antriebe  
Mechanisms  
Mecanismos  
Meccanismi  
Mecanismos  
Механизмы

MAE 6

MR 415 H24 - 50 Hz			↓				↑				ch - PS hp	kW		
	180 LBR 120 L 580	m/min τ	5,3/53	8,4/84	13,5/135	21,4/214	2,6/26	4,2/42	6,7/67	10,7/107	180	132	580 m	
	124 VBR	τ/min U/min - rpm	1 min 31 s									125	90	
	R - 8,8	m/min	0 0,67									2 x 6	2 x 4,4	
	Y 800 A RT584 A1 - 2V	m/min	13,5 - 27									8 x 7	8 x 5,2	
	J 850 A													
	ZX 6830 RT 664 A2B - 2V	m/min	16 - 32									6 x 7	6 x 5,2	
CEI 38	IEC 38	400 V (+6% -10%)		300 kVA										

MR 415 H24 - 60 Hz			↓				↑				ch - PS hp	kW		
	215 LBR 120 L 580	m/min τ	6,3/63	10/100	16/162	26/256	3,1/31	5/50	8/81	13/128	215	158	580 m	
	150 VBR	τ/min U/min - rpm	1 min 16 s									148	108	
	R - 10,5	m/min	0 0,8									2 x 7,2	2 x 5,3	
	Y 800 A RT584 A1 - 2V	m/min	16 - 32									8 x 8,4	8 x 6,2	
	J 850 A													
	ZX 6830 RT 664 A2B - 2V	m/min	19 - 38									6 x 8,4	6 x 6,2	
CEI 38	IEC 38	480 V (+6% -10%)		350 kVA										

	<b>FR</b>	Levage		<b>DE</b>	Heben		<b>EN</b>	Hoisting		<b>ES</b>	Elevación		<b>IT</b>	Sollevamento		<b>PT</b>	Elevação		<b>RU</b>	Подъем
		Distribution			Katzfahren			Trolleying			Distribución			Diribuzione			Distribuição			Перемещение каретки
		Orientation			Schwenken			Slewing			Orientación			Rotazione			Rotação			Поворот
		Translation			Kranfahren			Travelling			Traslación			Traslazione			Translação			Перемещение крана



Document commercial non contractuel. Pour toute information technique se référer à la notice correspondante.

Unverbindliches Vertriebsdokument. Für technische Informationen, siehe die entsprechenden Anweisungen.

This commercial document is not legally binding. For any technical information, please refer to the corresponding instructions.

Documento commercial no contractual. Para cualquier información técnica, ver la noticia correspondiente.

Documento commerciale non vincolante, per tutte le informazioni tecniche fare riferimento al catalogo istruzioni.

Documento comercial não contratual. Para qualquer informação técnica complementar consultar as respectivas instruções.

Этот коммерческий документ не является юридически обязательным. Для получения технической информации, см. соответствующие инструкции.



**Manitowoc - Americas - World Headquarters**  
2400 S. 44th Street • Manitowoc • WI 54220 USA  
Tel: +1 920 684 4410 • Fax: +1 920 652 9778

**Manitowoc - Europe, Middle East & Africa**  
Manitowoc France SAS  
18, rue de Charbonnières B.P. 173 • 69132 ECULLY Cedex • FRANCE  
Tel: +33 (0)4 72 18 20 20 • Fax: +33 (0)4 72 18 20 00

**Manitowoc - Asia Pacific**  
16F Xu Hui Yuan Building,  
1089 Zhongshan No.2 Road (S) • Shanghai 200030 China  
Tel: +86 21 6457 0066 • Fax: +86 21 6457 4955

MR 415 H24

REF. 2003 49 MAE 7