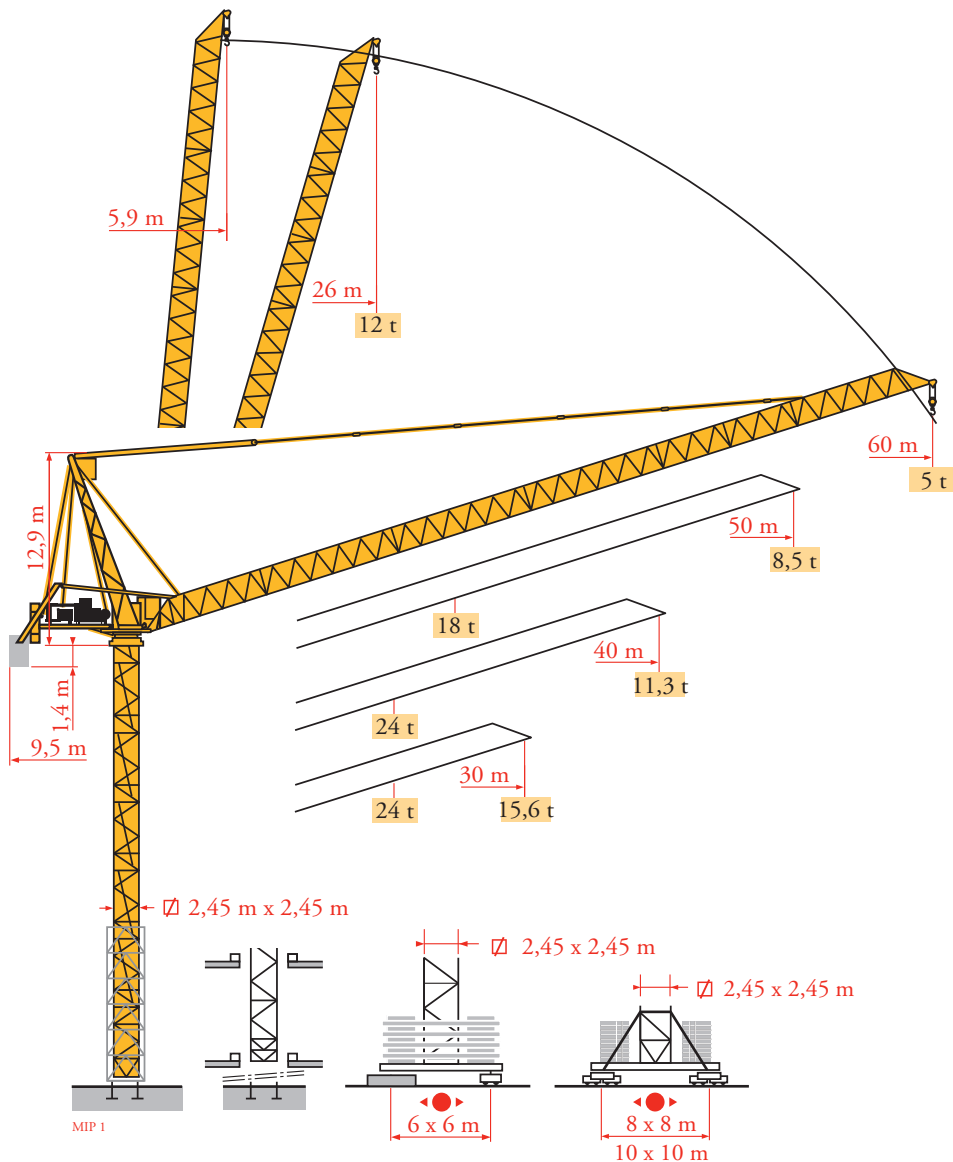


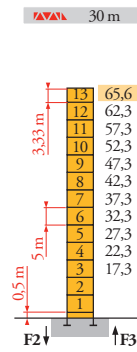
Potain MR 415 H24



Mat / Réactions
 Maste / Eckdrücke
 Masts / Reações
 Mástil /
 Reacciones
 Torre / Reazioni
 Tramo / Reações
 Композиции
 башни / Реакции

MIP1

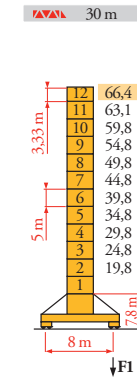
2,45 m
 30 m ⇒ 60 m



H (m)	5 m	3,33 m
30 m	65,6	12
40 m	62,3	12
50 m	57,3	11
60 m	52,3	10

P 800 A

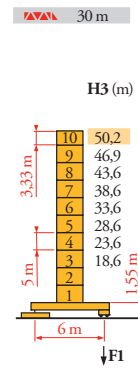
F2	219 t
F3	137 t
	104 t



H (m)	5 m	3,33 m
30 m	66,4	10
40 m	63,1	10
50 m	58,1	9
60 m	53,1	8

Y 800 A

F1	154 t
	197 t
	139 t

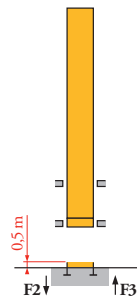


H3 (m)	H4 (m)	5 m	3,33 m
30 m	50,2	-	8
40 m	46,9	-	8
50 m	45,2	46,6	7
60 m	40,2	40	6

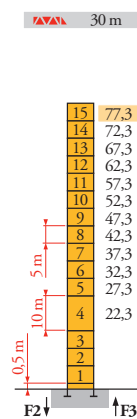
ZX 6830

F1	135 t
	141 t
	105 t

ZX 6830



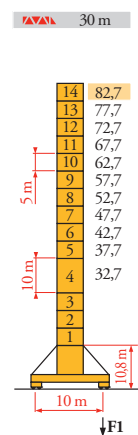
B 800 B



H (m)	10 m	5 m	3,33 m
30 m	77,3	1	14
40 m	74	1	12
50 m	69	1	11
60 m	64	1	10

P 850 A

F2	252 t
	583 t
F3	163 t
	459 t
	118 t



H (m)	10 m	5 m	3,33 m
30 m	82,7	1	13
40 m	79,4	1	11
50 m	74,4	1	10
60 m	71,1	1	10

J 850 A

F1	170 t
	241 t
	173 t

FR

- Réactions en service
- Réactions hors service
- A vide sans lest (ni train de transport) avec flèche et hauteur maximum

DE

- Reaktionskräfte in Betrieb
- Reaktionskräfte außer Betrieb
- Ohne Last, Ballast (und Transportachse), mit Maximalausleger und Maximalhöhe

EN

- Reactions in service
- Reactions out of service
- Without load, ballast (or transport axles), with maximum jib and maximum height

ES

- Reacciones en servicio
- Reacciones fuera de servicio
- Sin carga, sin lastre, (ni tren de transporte), flecha y altura máxima

IT

- Reazioni in servizio
- Reazioni fuori servizio
- A vuoto, senza zavorra (ne assali di trasporto) con braccio massimo e altezza massima

PT

- Reações em serviço
- Reações fora de serviço
- Sem carga (nem trem de transporte)- sem lastro com lança e altura máximas

RU

- Реакции при работе
- Реакции в покое
- Вес без груза, балласта (или транспортных осей), с максимальной длиной стрелы и максимальной высотой

● Nous consulter

● Auf Anfrage

● Consult us

● Consultarnos

● Consultateci

● Consultar-nos

● Проконсультируйтесь у нас

Mécanismes
Antriebe
Mechanisms
Mecanismos
Meccanismi
Mecanismos
Механизмы

MIP1

MR 415 H24 - 50 Hz			↓				↓				ch - PS	kW		
	180 LBR 120 L 580	m/min	5,3/53	8,4/84	13,5/135	21,4/214	2,6/26	4,2/42	6,7/67	10,7/107	180	132	580 m	
		t	12	7,3	4,3	2,35	24	15	8,9	5				
	124 VBR	tr/min U/min - rpm	1 min 31 s										125	90
	R - 8,8	m/min	0 → 0,67										2 x 6	2 x 4,4
	Y 800 A	RT584 A1 - 2V	13,5 - 27										8 x 7	8 x 5,2
	J 850 A													
	ZX 6830	RT 664 A2B - 2V	16 - 32										6 x 7	6 x 5,2
	IEC 60204-32	400 V (+10% -10%) 50Hz / 480V (+6% -10%) 60Hz					300 kVA							

MR 415 H24 - 60 Hz			↓				↓				ch - PS	kW		
	215 LBR 120 L 580	m/min	6,3/63	10/100	16/162	26/256	3,1/31	5/50	8/81	13/128	215	158	580 m	
		t	12	7,3	4,3	2,35	24	15	8,9	5				
	150 VBR	tr/min U/min - rpm	1 min 16 s										148	108
	R - 10,5	m/min	0 → 0,8										2 x 7,2	2 x 5,3
	Y 800 A	RT584 A1 - 2V	16 - 32										8 x 8,4	8 x 6,2
	J 850 A													
	ZX 6830	RT 664 A2B - 2V	19 - 38										6 x 8,4	6 x 6,2
	IEC 60204-32	400 V (+10% -10%) 50Hz / 480V (+6% -10%) 60Hz					350 kVA							

	FR	DE	EN	ES	IT	PT	RU
	Levage	Heben	Hoisting	Elevación	Sollevamento	Elevação	Подъем
	Distribution	Katzfahren	Trolleying	Distribución	Distribuzione	Distribuição	Перемещение каретки
	Orientation	Schwenken	Slewing	Orientación	Rotazione	Rotação	Поворот
	Translation	Kranfahren	Travelling	Traslación	Traslazione	Translação	Перемещение крана



Document commercial non contractuel. Pour toute information technique se référer à la notice correspondante.

Unverbindliches Vertriebsdokument. Für technische Informationen, siehe die entsprechenden Anweisungen.

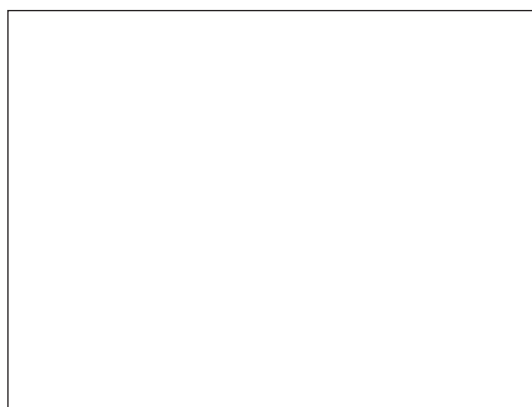
This commercial document is not legally binding. For any technical information, please refer to the corresponding instructions.

Documento commercial no contractual. Para cualquier información técnica, ver la noticia correspondiente.

Documento commerciale non vincolante, per tutte le informazioni tecniche fare riferimento al catalogo istruzioni.

Documento comercial não contratual. Para qualquer informação técnica complementar consultar as respectivas instruções.

Этот коммерческий документ не является юридически обязательным. Для получения технической информации, см. соответствующие инструкции.



MR 415 H24



Manitowoc - Americas - World Headquarters
2400 S. 44th Street • Manitowoc • WI 54220 USA
Tel: +1 920 684 4410 • Fax: +1 920 652 9778

Manitowoc - Europe, Middle East & Africa
Ecully, France
18, rue de Charbonnières B.P. 173 • 69132 ECULLY Cedex • FRANCE
Tel: +33 (0)4 72 18 20 20 • Fax: +33 (0)4 72 18 20 00

Manitowoc - Asia Pacific
16F Xu Hui Yuan Building,
1089 Zhongshan No.2 Road (S) • Shanghai 200030 China
Tel: +86 21 6457 0066 • Fax: +86 21 6457 4955

REF. 2009 36 MIP 1