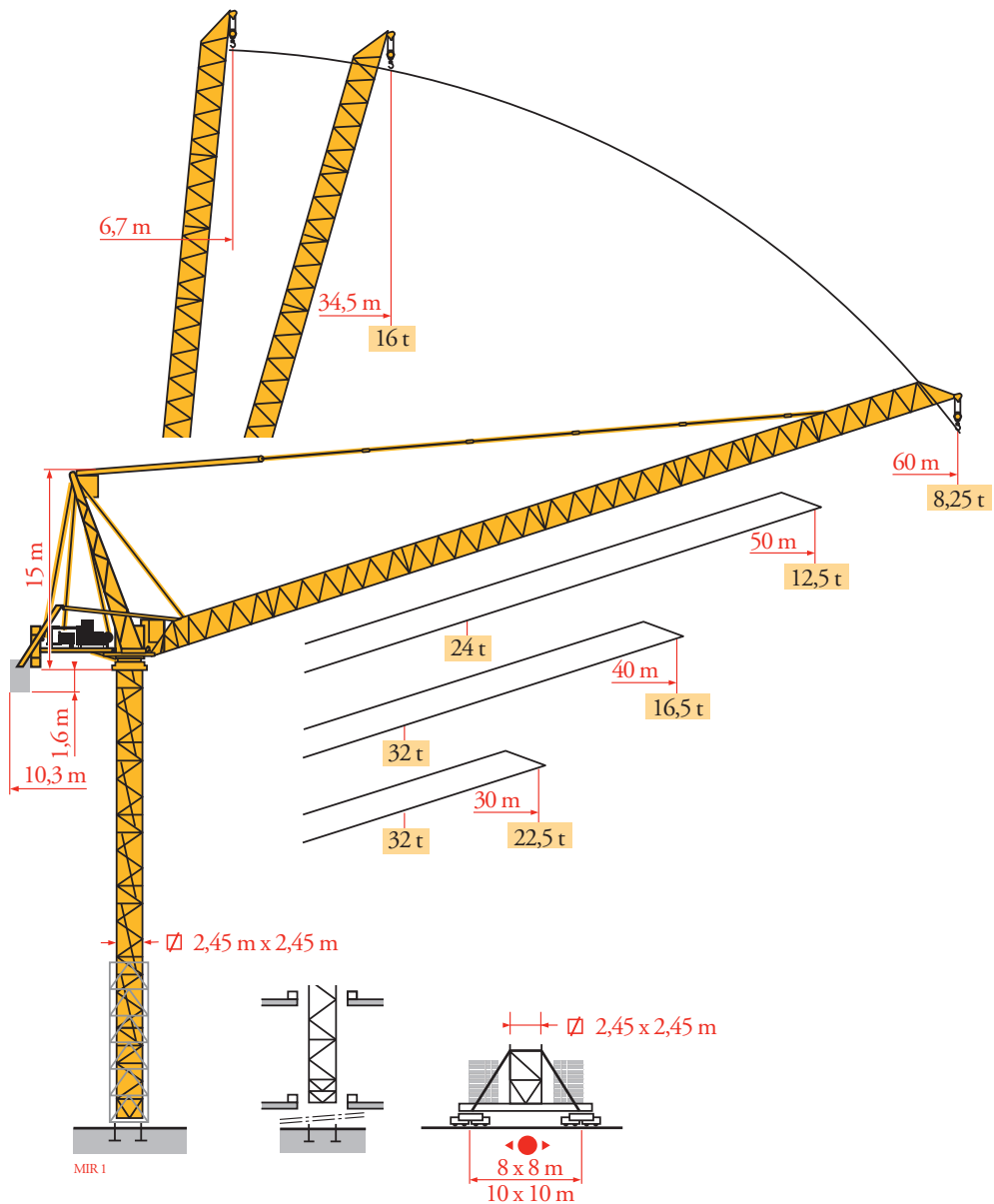


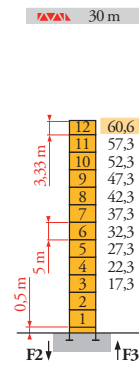
Potain MR 615 H32



Mat / Réactions
Maste / Eckdrücke
Masts / Reactions
Mástil / Reacciones
Torre / Reazioni
Tramo / Reacções
Композиции башни /
Реакции

MIR1

2,45 m
30 m ⇒ 60 m



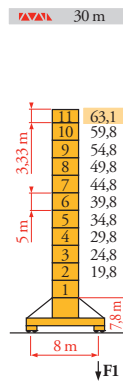
Span	H (m)	5 m	3,33 m
40 m	57,3	11	-
50 m	52,3	10	-
60 m	50,6	9	1

P 800 A

F2 ● 283 t
■ 343 t

F3 ● 191 t
■ 251 t

▲ 125 t

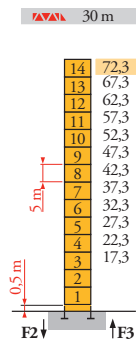


Span	H (m)	5 m	3,33 m
40 m	58,1	9	1
50 m	54,8	9	-
60 m	53,1	8	1

Y 800 A

F1 ● 155 t
■ 168 t

▲ 161 t



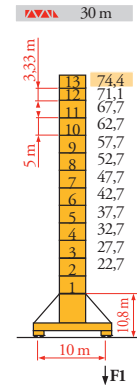
Span	H (m)	5 m	3,33 m
40 m	69	12	2
50 m	64	11	2
60 m	57,3	11	-

P 850 A

F2 ● 330 t
■ 536 t

F3 ● 225 t
■ 432 t

▲ 149 t



Span	H (m)	5 m	3,33 m
40 m	72,7	12	-
50 m	69,4	10	2
60 m	66,1	10	1

J 850 A

F1 ● 165 t
■ 214 t

▲ 200 t



FR

- Réactions en service
- Réactions hors service
- ▲ A vide sans lest (ni train de transport) avec flèche et hauteur maximum

i Nous consulter

DE

- Reaktionskräfte in Betrieb
- Reaktionskräfte außer Betrieb
- ▲ Ohne Last, Ballast (und Transportachse), mit Maximalausleger und Maximalhöhe

Auf Anfrage

EN

- Reactions in service
- Reactions out of service
- ▲ Without load, ballast (or tren de transporte), with maximum jib and maximum height

Consult us

ES

- Reacciones en servicio
- Reacciones fuera de servicio
- ▲ Sin carga, sin lastre, (ni tren de transporte), flecha y altura máxima

Consultarnos

IT

- Reazioni in servizio
- Reazioni fuori servizio
- ▲ A vuoto, senza zavorra (ne assali di trasporto) con braccio massimo e altezza massima

Consultateci

PT

- Reacções em serviço
- Reacções fora de serviço
- ▲ Sem carga (nem trem de transporte)- sem lastro com lança e altura máximas

Consultar-nos

RU

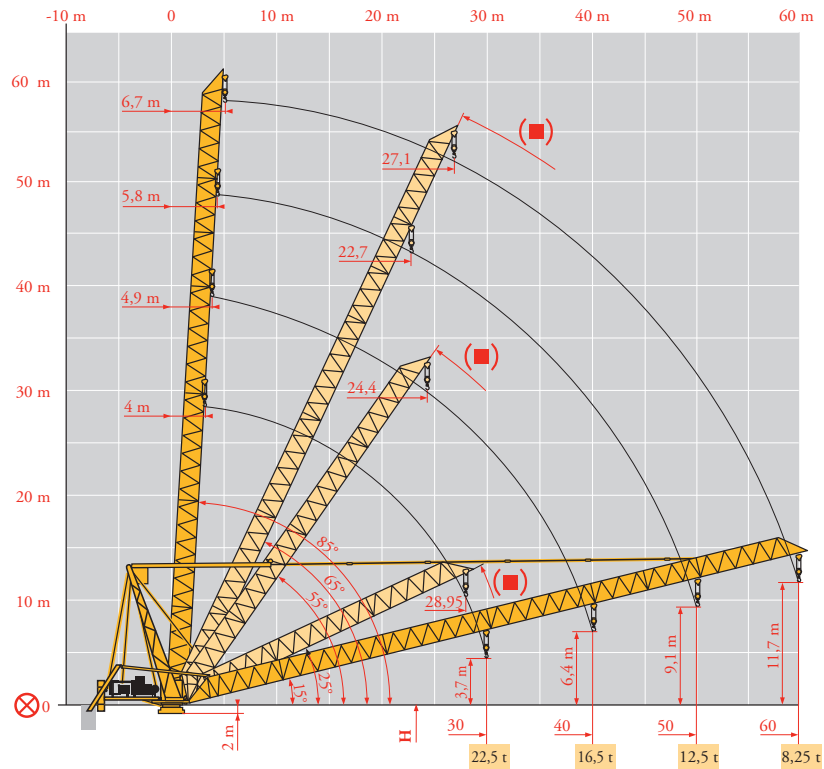
- Реакции при работе
- Реакции в покое
- ▲ Вес без груза, балласта (или транспортных осей), с максимальной длиной стрелы и максимальной высотой

Проконсультируйтесь у нас

Courbes de charges
 Lastkurven
 Load diagrams
 Curvas de cargas
 Curve di carico
 Curva de cargas
 Диаграммы
 грузоподъемностей

60 m	6,7	▶		34,5	35	37	40	42	45	47	50	52	55	57	60	m
▼	16															
50 m	5,8	▶		28,2	30	32	35	37	40	42	45	47	50	m		
▼	24															
▼	22,4															
▼	20,8															
▼	18,7															
▼	17,6															
▼	16															
▼	15,1															
▼	13,9															
▼	13,2															
▼	12,25															
▼	t															
40 m	4,9	▶		22,2	25	27	30	32	35	37	40	m				
▼	32															
▼	28,1															
▼	25,8															
▼	23															
▼	21,4															
▼	19,3															
▼	18,1															
▼	16,5															
▼	t															
▼	16															
▼	t															
30 m	4	▶		21,8	22	25	27	30	m							
▼	32															
▼	31,7															
▼	27,6															
▼	25,3															
▼	22,5															
▼	t															
▼	16															
▼	t															

Flèche relevée
 Ausleger in Steilstellung
 Luffing jib
 Flecha izada
 Braccio impennato
 Lança inclinada
 Маховая стрела



- | | | | | | | | | | | | | | | |
|---|-----------|-------------------------|-----------|----------------------|-----------|---------------------|-----------|----------------------------|-----------|-----------------------|-----------|------------------------------|-----------|--------------------|
| ⊗ | FR | Axe articulation flèche | DE | Ausleger-gelenkachse | EN | Jib hinge shaft | ES | Eje articulación de flecha | IT | Asse cerniera braccio | PT | Eixo de articulação da lança | RU | Ось шарнира стрелы |
| ■ | | Position girouette | | Windfreistellung | | Weathering position | | Posición eleta | | Libera rotazione | | Posição em catavento | | Флюгирование |

Mécanismes
Antriebe
Mechanisms
Mecanismos
Meccanismi
Mecanismos
Механизмы

MIR1

MR 615 H32 50 Hz												ch - PS hp	kW		
	200 LBR 160	m/min τ	4,7/47 16	7,7/77 9	12/120 5	20/200 2	2,35/23,5 32	3,85/38,5 18	6/60 10	10/100 4	200	150	670 m		
	180 VBR		1 min 48 s									180	132		
	RVF183 Optima +	τ/min U/min - rpm	0 → 1									3 x 12	3 x 9		
	RT 584 A1 - 2V	m/min	13,5 - 27									8 x 7	8 x 5,2		
	J 850 A	m/min													
IEC 60204-32															
400 V (+10% -10%) 50 Hz / 480V (+6% -10%) 60Hz						200 LBR 160 : 375 kVA									
MR 615 H32 60 Hz												ch - PS hp	kW		
	245 LBR 160	m/min τ	5,7/57 16	9,2/92 9	14,4/144 5	24/240 2	2,85/28,5 32	4,6/46 18	7,2/72 10	12/120 4	245	180	670 m		
	215 VBR		1 min 30 s									215	158		
	RVF183 Optima +	τ/min U/min - rpm	0 → 1									3 x 12	3 x 9		
	RT 584 A1 - 2V	m/min	16 - 32									8 x 8,4	8 x 6,2		
	J 850 A	m/min													
IEC 60204-32															
400 V (+10% -10%) 50 Hz / 480V (+6% -10%) 60Hz						245 LBR 160 : 445 kVA									



FR

Levage
Distribution
Orientation
Translation

DE

Heben
Katzfahren
Schwenken
Kranfahren

EN

Hoisting
Trolleying
Slewing
Travelling

ES

Elevación
Distribución
Orientación
Traslación

IT

Sollevamento
Distribuzione
Rotazione
Traslazione

PT

Elevação
Distribuição
Rotação
Translação

RU

Подъем
Перемещение каретки
Поворот
Перемещение крана



Document commercial non contractuel. Pour toute information technique se référer à la notice correspondante.

Unverbindliches Vertriebsdokument. Für technische Informationen, siehe die entsprechenden Anweisungen.

This commercial document is not legally binding. For any technical information, please refer to the corresponding instructions.

Documento comercial no contractual. Para cualquier información técnica, ver la noticia correspondiente.

Documento commerciale non vincolante, per tutte le informazioni tecniche fare riferimento al catalogo istruzioni.

Documento comercial não contratual. Para qualquer informação técnica complementar consultar as respectivas instruções.

Этот коммерческий документ не является юридически обязательным. Для получения технической информации, см. соответствующие инструкции.



Manitowoc - Americas - World Headquarters
2400 S. 44th Street • Manitowoc • WI 54220 USA
Tel: +1 920 684 4410 • Fax: +1 920 652 9778

Manitowoc - Europe, Middle East & Africa
Ecully, France
18, rue de Charbonnières B.P. 173 • 69132 ECULLY Cedex • FRANCE
Tel: +33 (0)4 72 18 20 20 • Fax: +33 (0)4 72 18 20 00

Manitowoc - Asia Pacific
16F Xu Hui Yuan Building,
1089 Zhongshan No.2 Road (S) • Shanghai 200030 China
Tel: +86 21 6457 0066 • Fax: +86 21 6457 4955

MR 615 H32

REF. 2009 36 MIR 1