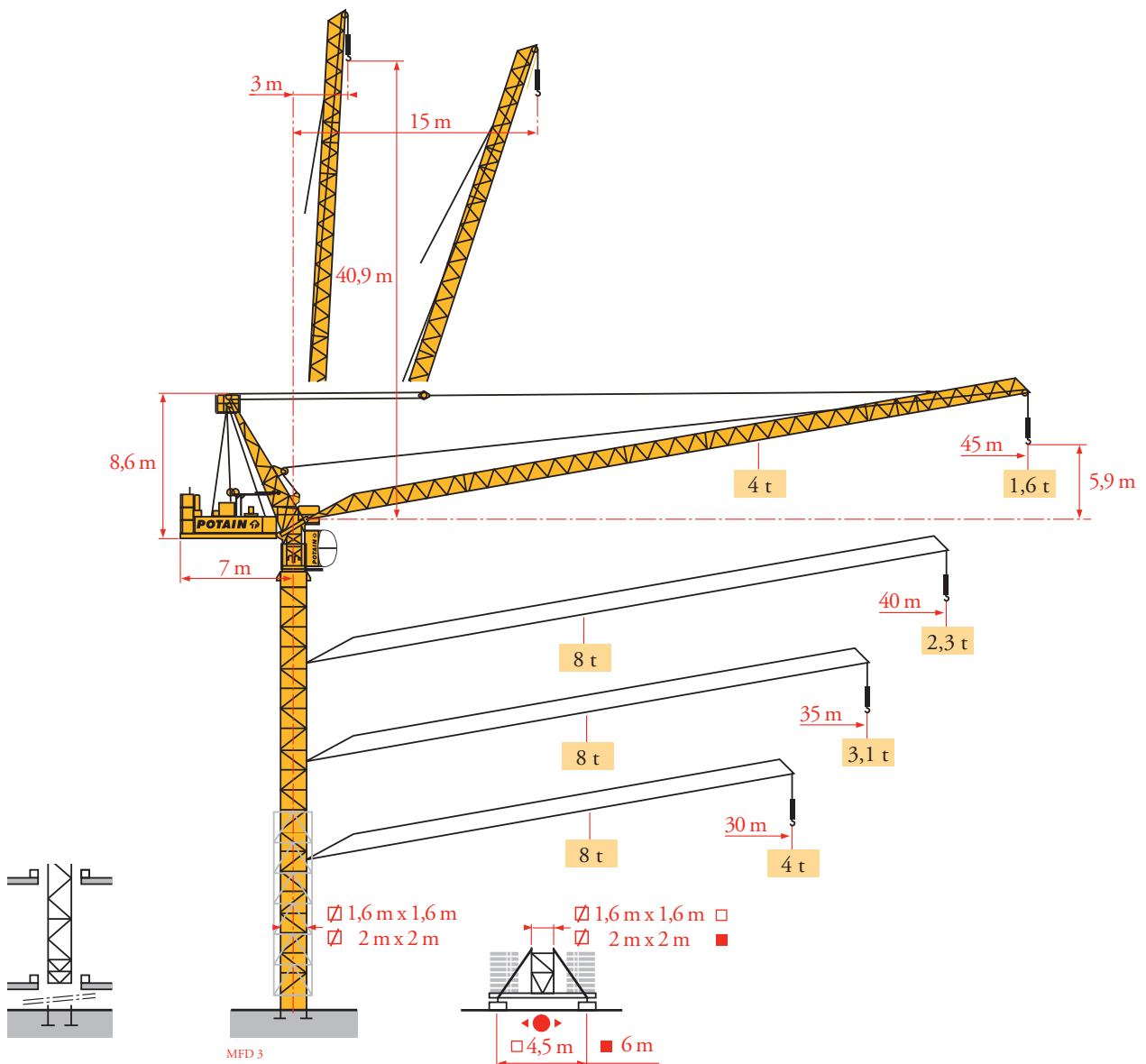


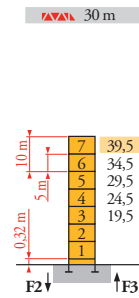
Potain MR 90C



Mat / Réactions
Maste / Eckdrücke
Masts / Reactions
Mástil / Reacciones
Torre / Reazioni
Tramo / Reacções
Композиции
башни / Реакции

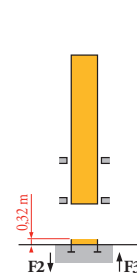
MI1

Télescopable 1,6 m
Teleskopierbar 1,6 m
Telescopic 1,6 m
Telescopico 1,6 m
Telescopagem 1,6 m
Телескопируемый,
башня 1,6м x 1,6м

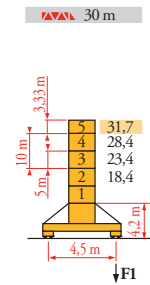


30 m	H (m)	5 m	3,33 m
35 m	37,8	6	1
40 m	34,5	6	-
45 m	32,8	5	1

P 41 A	
F2	107 t
F3	82 t
	37 t

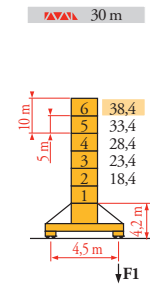


B 43 A	
	1



30 m	H (m)	5 m	3,33 m
35 m	28,4	4	-
40 m	25	2	2
45 m	23,4	3	-

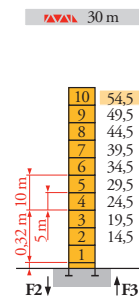
S 40 A	
F1	63 t
	72 t
	41 t



30 m	H (m)	5 m	3,33 m
35 m	35	4	2
40 m	31,7	4	1
45 m	30	3	2

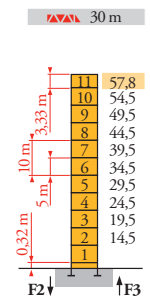
S 41 A	
F1	77 t
	97 t
	43 t

Télescopable 2 m
Teleskopierbar 2 m
Telescopic 2 m
Telescopico 2 m
Telescopagem 2 m
Телескопируемый,
башня 1,6м x 1,6м



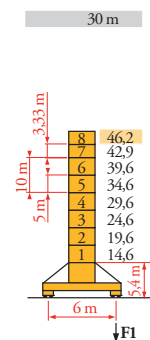
30 m	H (m)	5 m	3,33 m
35 m	51,2	8	2
40 m	49,5	9	-
45 m	46,2	7	2

P 61 A	
F2	117 t
F3	85 t
	252 t
	53 t



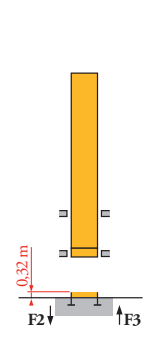
30 m	H (m)	5 m	3,33 m
35 m	54,5	10	-
40 m	52,8	9	1
45 m	51,2	8	2

P 62 A	
F2	123 t
F3	89 t
	280 t
	55 t



30 m	H (m)	5 m	3,33 m
35 m	42,9	6	1
40 m	39,6	6	-
45 m	36,2	4	2

V 60 A	
F1	81 t
	118 t
	58 t



B 60 A	
	1

FR

- Réactions en service
- Réactions hors service



A vide sans lest (ni train de transport) avec flèche et hauteur maximum.

DE

- Reaktionskräfte in Betrieb
- Reaktionskräfte außer Betrieb

Ohne Last, Ballast (und Transportachse), mit Maximalausleger und Maximalhöhe.

EN

- Reactions in service
- Reactions out of service

Without load, ballast (or transport axes), with maximum jib and maximum height.

ES

- Reacciones en servicio
- Reacciones fuera de servicio

Sin carga, sin lastre, (ni tren de transporte), flecha y altura máxima.

IT

- Reazioni in servizio
- Reazioni fuori servizio

A vuoto, senza zavorra (ne assali di trasporto) con braccio massimo e altezza massima.

PT

- Reacções em serviço
- Reacções fora de serviço

Sem carga (nem trem de transporte)-sem lastro com lança e altura máximas.

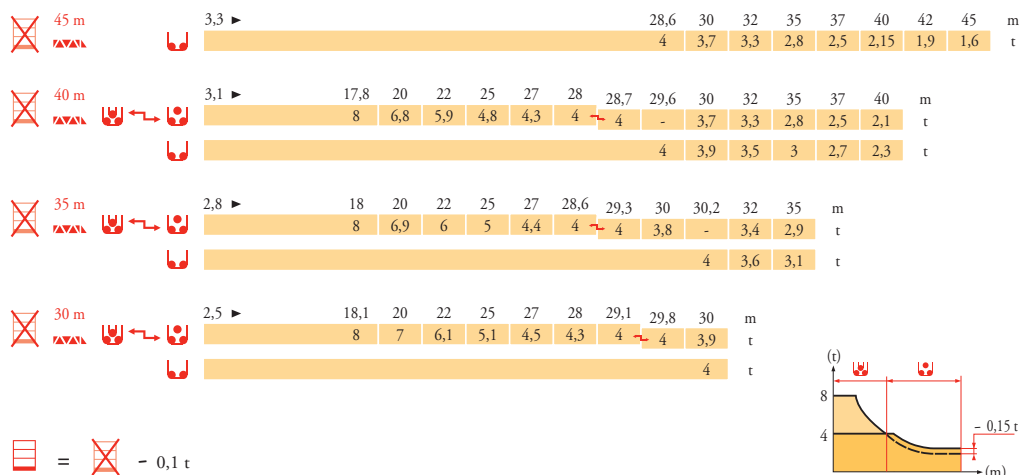
RU

- Реакции при работе
- Реакции в покое

Вес без груза, балласта (или транспортных осей), с максимальной длиной стрелы и максимальной высотой.

Courbes de charges
Lastkurven
Load diagrams
Curvas de cargas
Curve di carico
Curva de cargas
Диаграммы грузоподъемностей

MR 1



Mécanismes
Antriebe
Mechanisms
Mecanismos
Meccanismi
Mecanismos
Механизмы

MIII

MR 90 C - 50 Hz											ch - PS hp	kW			
	33 LVF 20 Optima	m/min	2,2 → 8,6 → 26 → 34 → 50 → 64					1,1 → 4,3 → 13 → 17 → 25 → 32					30	22	469 m
	50 LVF 20 Optima	τ	4 4 4 3 2 1					8 8 8 6 4 2					50	37	697 m
	50 VVF 20	m/min	1 min 25 s										50	37	
	RVF 152 Optima +	tr/min U/min - rpm	0 → 0,8										2 x 5,5	2 x 4	
	S 41 A A1 - 2V	m/min	15 - 30										4 x 5	4 x 3,7	
	V 60 A A1 - 2V	m/min	13,5 - 27										4 x 7	4 x 5,2	

IEC 60204-32	kVA
400 V (+10% -10%) 50 Hz / 480V (+6% -10%) 60Hz	33 LVF : 95 kVA 50 LVF : 112 kVA

MR 90 C - 60 Hz											ch - PS hp	kW			
	33 LVF 20 Optima	m/min	2,2 → 8,6 → 26 → 34 → 50 → 64					1,1 → 4,3 → 13 → 17 → 25 → 32					30	22	469 m
	50 LVF 20 Optima	τ	4 4 4 3 2 1					8 8 8 6 4 2					50	37	697 m
	50 VVF 20	m/min	1 min 25 s										50	37	
	RVF 152 Optima +	tr/min U/min - rpm	0 → 0,8										2 x 5,5	2 x 4	
	S 41 A A1 - 2V	m/min	18 - 36										4 x 6	4 x 4,4	
	V 60 A A1 - 2V	m/min	16 - 32										4 x 8,4	4 x 6,2	

IEC 60204-32	kVA
400 V (+10% -10%) 50 Hz / 480V (+6% -10%) 60Hz	33 LVF : 95 kVA 50 LVF : 112 kVA

FR	DE	EN	ES	IT	PT	RU
Leverage	Heben	Hoisting	Elevación	Sollevamento	Elevação	Подъем
Relevance	Ausleger-Einziehen	Luffing	Elevación de flecha	Brandeggio	Inclinação da lança	Подъем стрелы
Orientation	Schwenken	Slewing	Orientación	Rotazione	Rotação	Поворот
Translation	Kranfahren	Travelling	Traslación	Traslazione	Translação	Перемещение крана
Nous consulter	Auf Anfrage	Consult us	Consultarnos	Consultateci	Consultar-nos	Проконсультируйтесь у нас



Document commercial non contractuel. Pour toute information technique se référer à la notice correspondante.

Unverbindliches Vertriebsdokument. Für technische Informationen, siehe die entsprechenden Anweisungen.

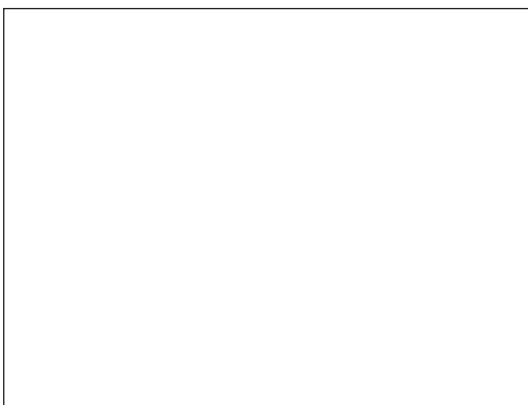
This commercial document is not legally binding. For any technical information, please refer to the corresponding instructions.

Documento comercial no contractual. Para cualquier información técnica, ver la noticia correspondiente.

Documento commerciale non vincolante, per tutte le informazioni tecniche fare riferimento al catalogo istruzioni.

Documento comercial não contratual. Para qualquer informação técnica complementar consultar as respectivas instruções.

Этот коммерческий документ не является юридически обязательным. Для получения технической информации, см. соответствующие инструкции.



Manitowoc - Americas - World Headquarters
2400 S. 44th Street • Manitowoc • WI 54220 USA
Tel: +1 920 684 4410 • Fax: +1 920 652 9778

Manitowoc - Europe, Middle East & Africa
Ecully, France
18, rue de Charbonnières B.P. 173 • 69132 ECULLY Cedex • FRANCE
Tel: +33 (0)4 72 18 20 20 • Fax: +33 (0)4 72 18 20 00

Manitowoc - Asia Pacific
16F Xu Hui Yuan Building,
1089 Zhongshan No.2 Road (S) • Shanghai 200030 China
Tel: +86 21 6457 0066 • Fax: +86 21 6457 4955

MR 90C

REF. 2009 36 MIII 1